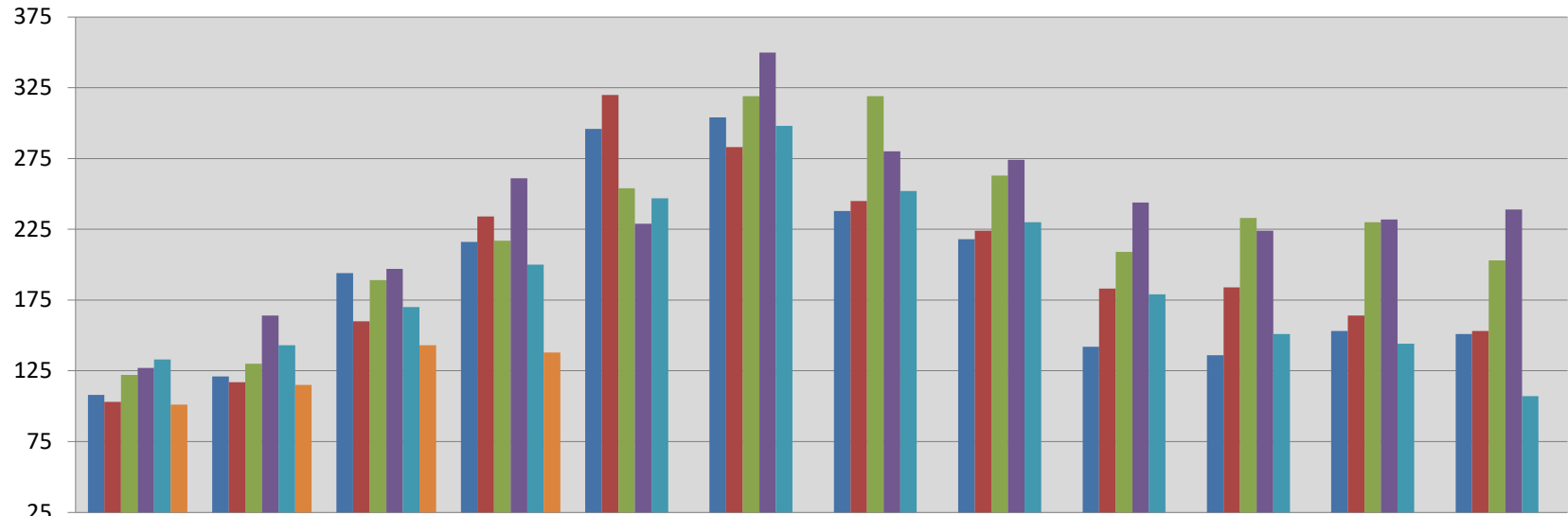




Single Family Homes Sales Per Month in Boone County, Missouri

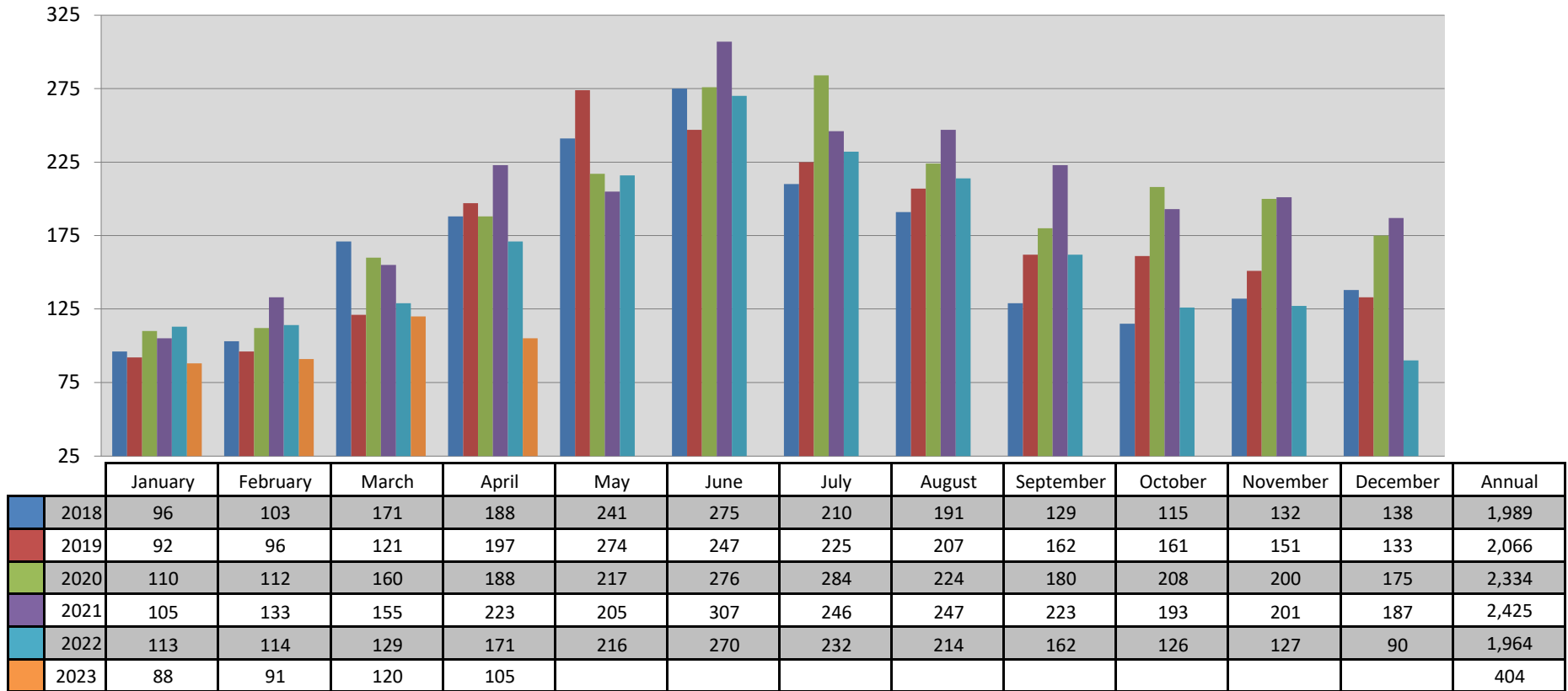


	January	February	March	April	May	June	July	August	September	October	November	December	Annual
2018	108	121	194	216	296	304	238	218	142	136	153	151	2,277
2019	103	117	160	234	320	283	245	224	183	184	164	153	2,370
2020	122	130	189	217	254	319	319	263	209	233	230	203	2,688
2021	127	164	197	261	229	350	280	274	244	224	232	239	2,821
2022	133	143	170	200	247	298	252	230	179	151	144	107	2,254
2023	101	115	143	138									497

This representation is based in whole or in part on the data supplied by the Columbia Board of REALTORS® (CBOR). CBOR does not guarantee nor is in any way responsible for its accuracy. Data maintained by CBOR may not reflect all real estate activity in the market.



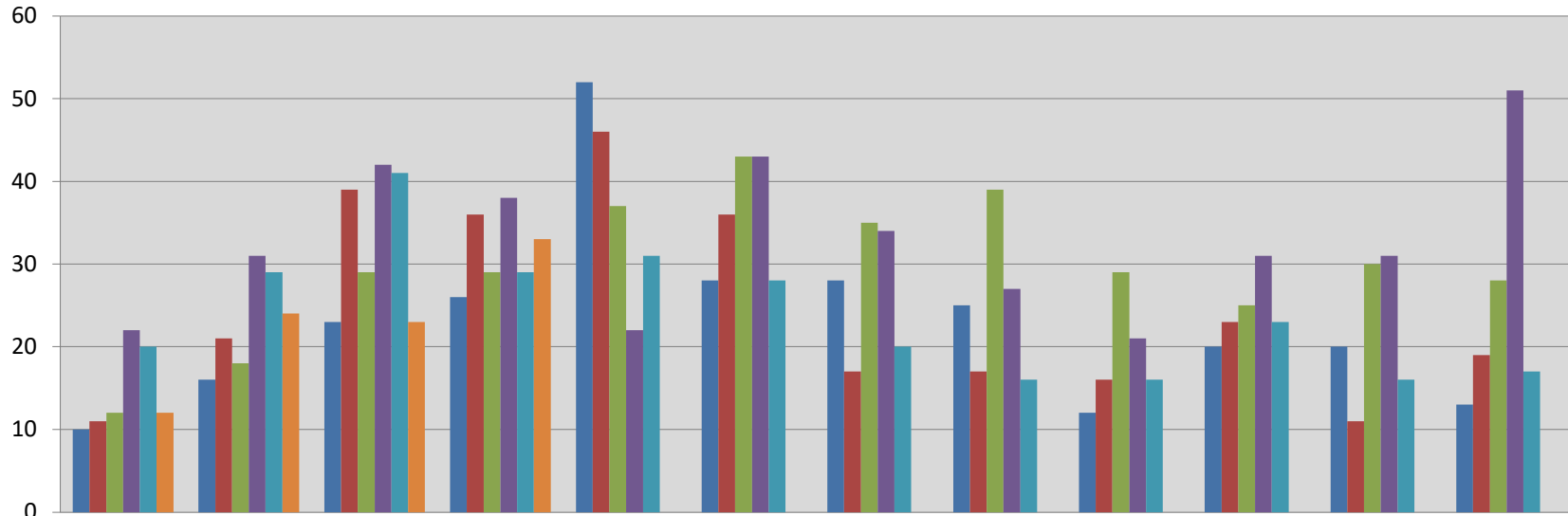
Existing Single Family Homes Sales Per Month in Boone County, Missouri



This representation is based in whole or in part on the data supplied by the Columbia Board of REALTORS® (CBOR). CBOR does not guarantee nor is in any way responsible for its accuracy. Data maintained by CBOR may not reflect all real estate activity in the market.



New Construction Single Family Homes Sales Per Month in Boone County, MO



	January	February	March	April	May	June	July	August	September	October	November	December	Annual
2018	10	16	23	26	52	28	28	25	12	20	20	13	273
2019	11	21	39	36	46	36	17	17	16	23	11	19	292
2020	12	18	29	29	37	43	35	39	29	25	30	28	354
2021	22	31	42	38	22	43	34	27	21	31	31	51	393
2022	20	29	41	29	31	28	20	16	16	23	16	17	286
2023	12	24	23	33									92

This representation is based in whole or in part on the data supplied by the Columbia Board of REALTORS® (CBOR). CBOR does not guarantee nor is in any way responsible for its accuracy. Data maintained by CBOR may not reflect all real estate activity in the market.



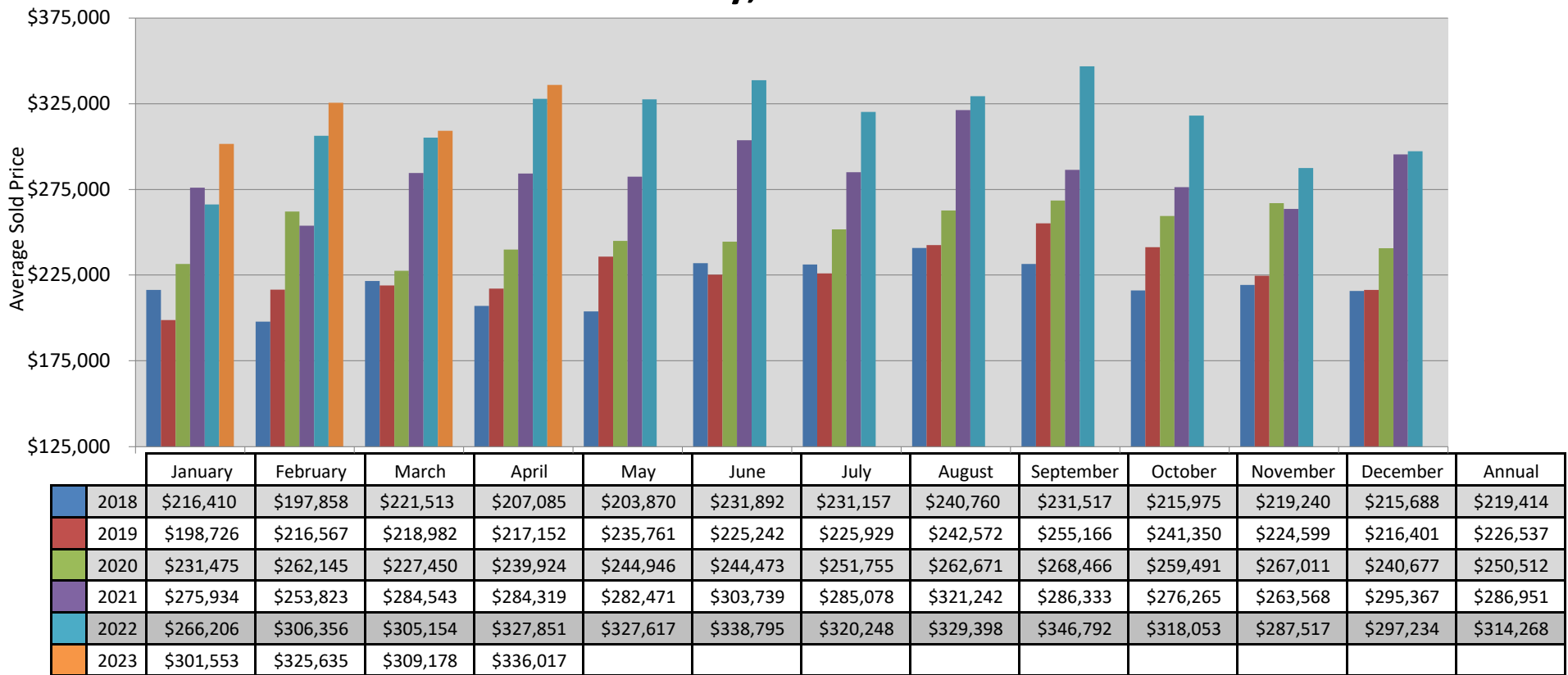
Single Family Homes Average Sold Price Per Month in Boone County, Missouri



This representation is based in whole or in part on the data supplied by the Columbia Board of REALTORS® (CBOR). CBOR does not guarantee nor is in any way responsible for its accuracy. Data maintained by CBOR may not reflect all real estate activity in the market.



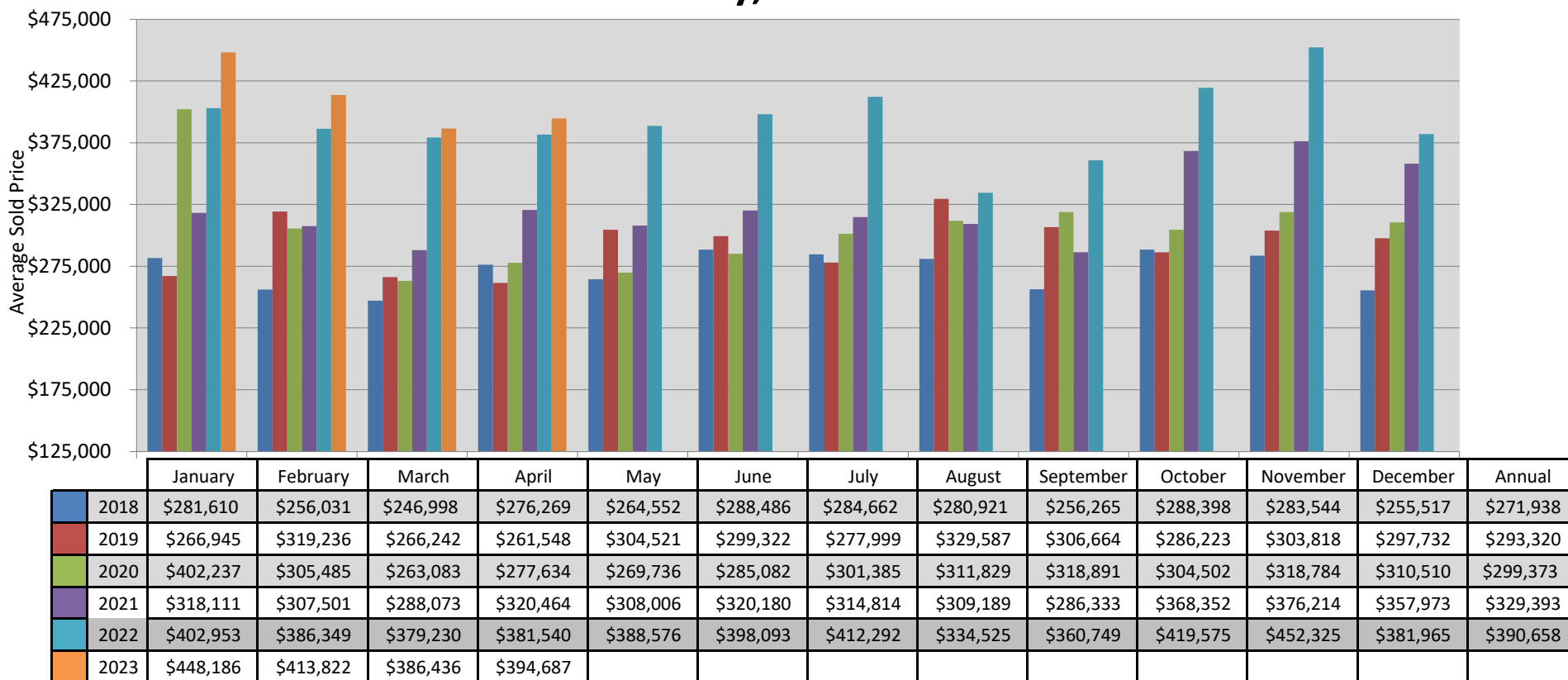
Existing Single Family Homes Average Sold Price Per Month in Boone County, Missouri



This representation is based in whole or in part on the data supplied by the Columbia Board of REALTORS® (CBOR). CBOR does not guarantee nor is in any way responsible for its accuracy. Data maintained by CBOR may not reflect all real estate activity in the market.



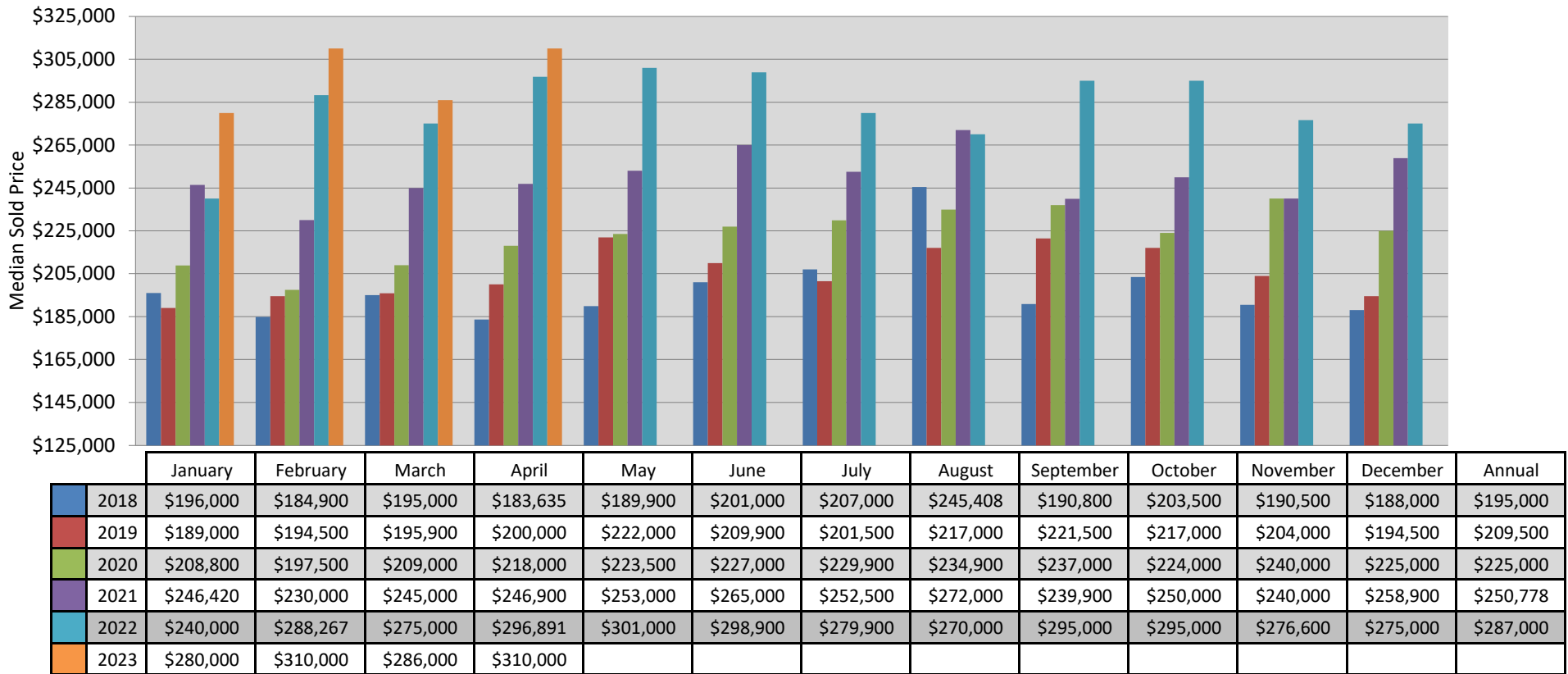
New Construction Single Family Homes Average Sold Price Per Month in Boone County, Missouri



This representation is based in whole or in part on the data supplied by the Columbia Board of REALTORS® (CBOR). CBOR does not guarantee nor is in any way responsible for its accuracy. Data maintained by CBOR may not reflect all real estate activity in the market.



Single Family Homes Median Sold Price Per Month in Boone County, Missouri



This representation is based in whole or in part on the data supplied by the Columbia Board of REALTORS® (CBOR). CBOR does not guarantee nor is in any way responsible for its accuracy. Data maintained by CBOR may not reflect all real estate activity in the market.



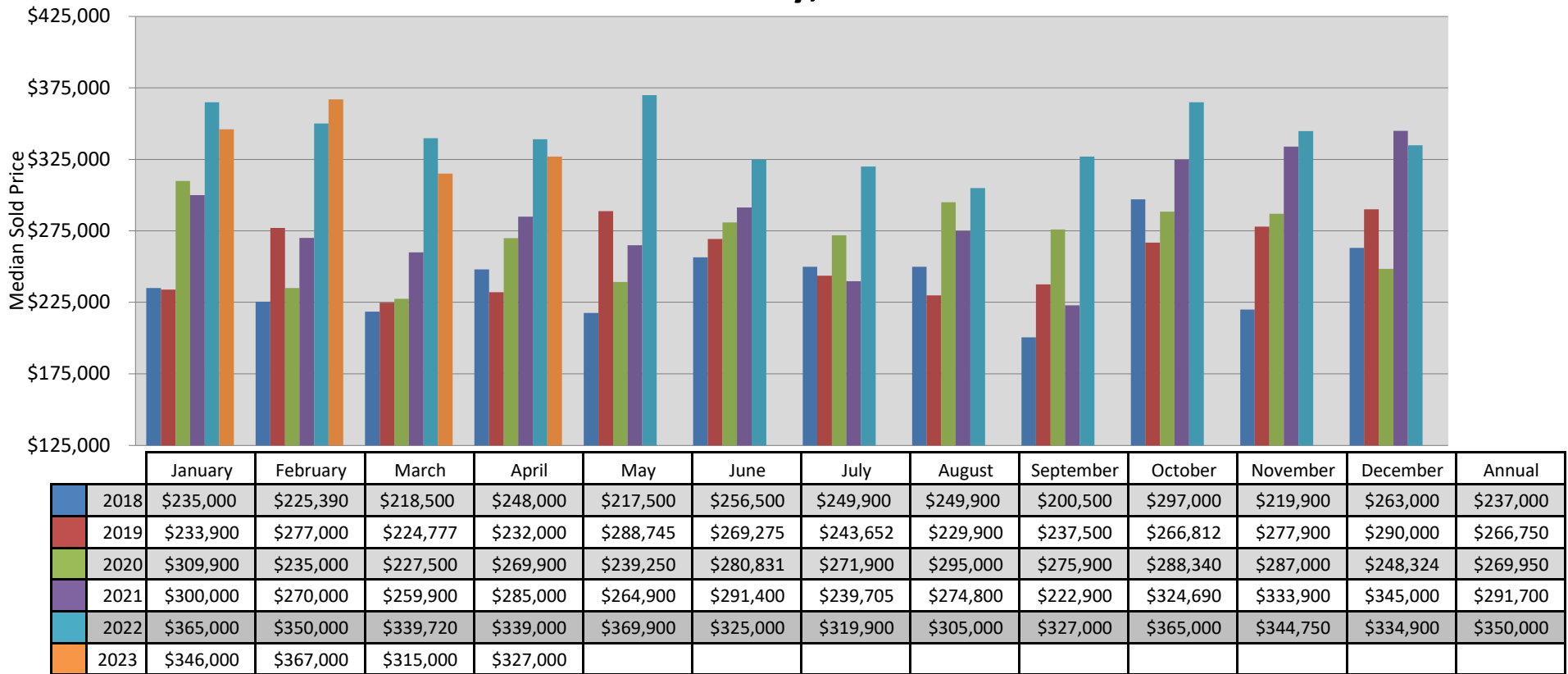
Existing Single Family Homes Median Sold Price Per Month in Boone County, Missouri



This representation is based in whole or in part on the data supplied by the Columbia Board of REALTORS® (CBOR). CBOR does not guarantee nor is in any way responsible for its accuracy. Data maintained by CBOR may not reflect all real estate activity in the market.



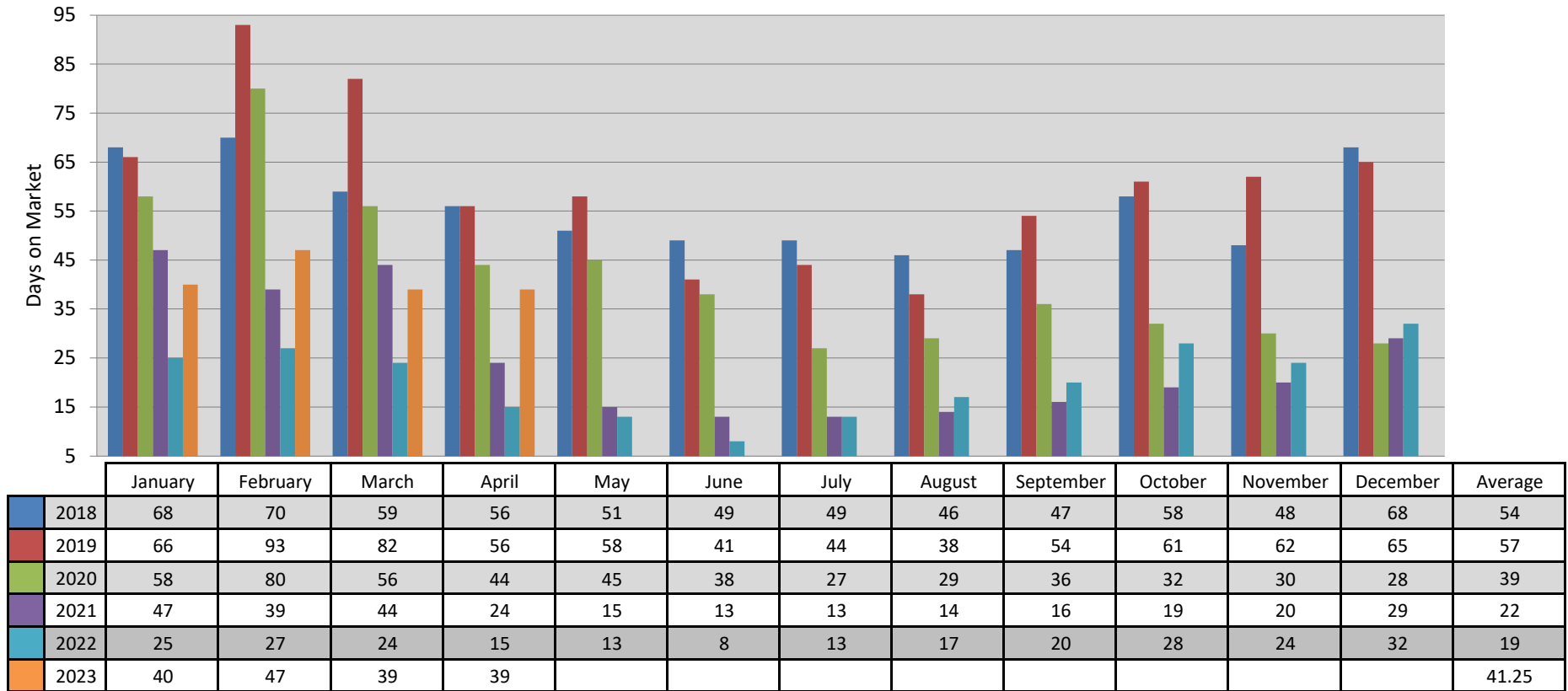
New Construction Single Family Homes Median Sold Price Per Month in Boone County, Missouri



This representation is based in whole or in part on the data supplied by the Columbia Board of REALTORS® (CBOR). CBOR does not guarantee nor is in any way responsible for its accuracy. Data maintained by CBOR may not reflect all real estate activity in the market.



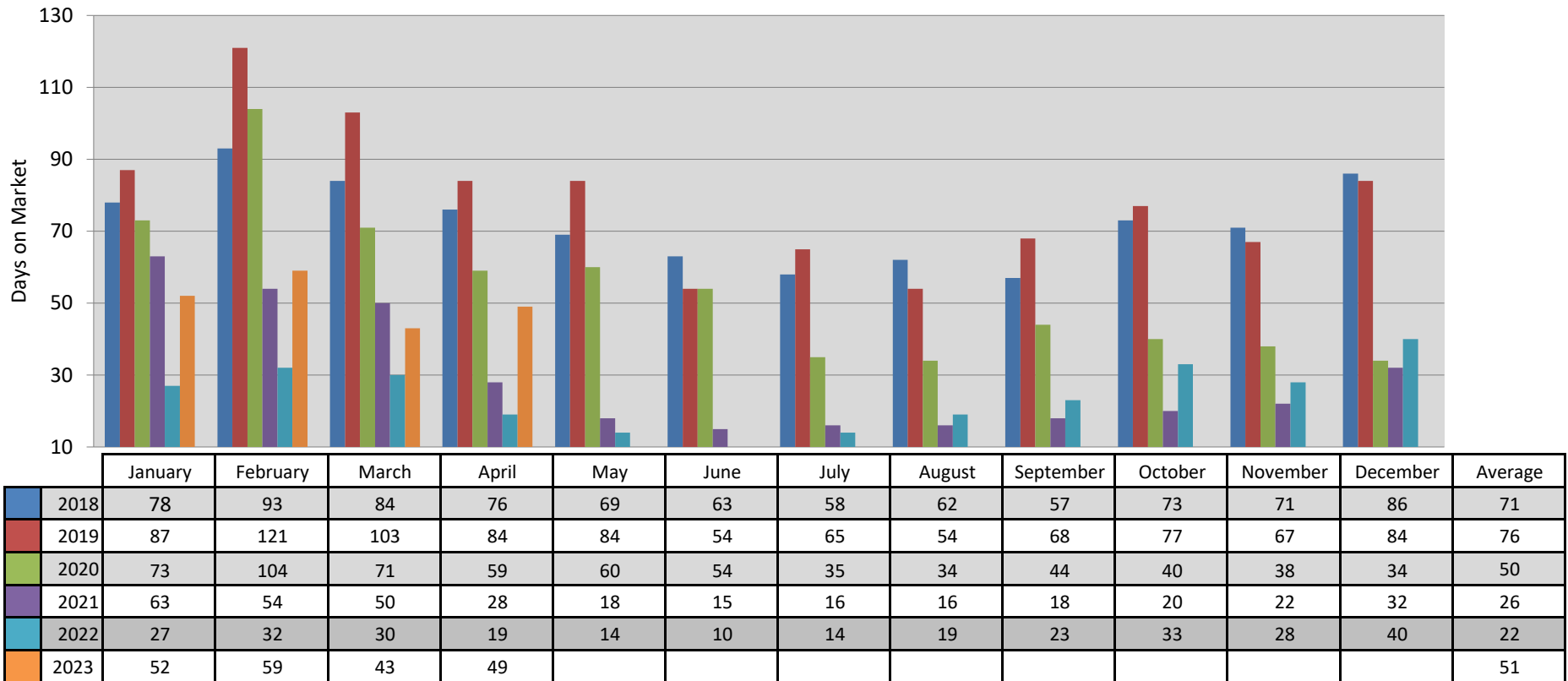
Single Family Homes Average Days on Market Per Month in Boone County, MO



This representation is based in whole or in part on the data supplied by the Columbia Board of REALTORS® (CBOR). CBOR does not guarantee nor is in any way responsible for its accuracy. Data maintained by CBOR may not reflect all real estate activity in the market.



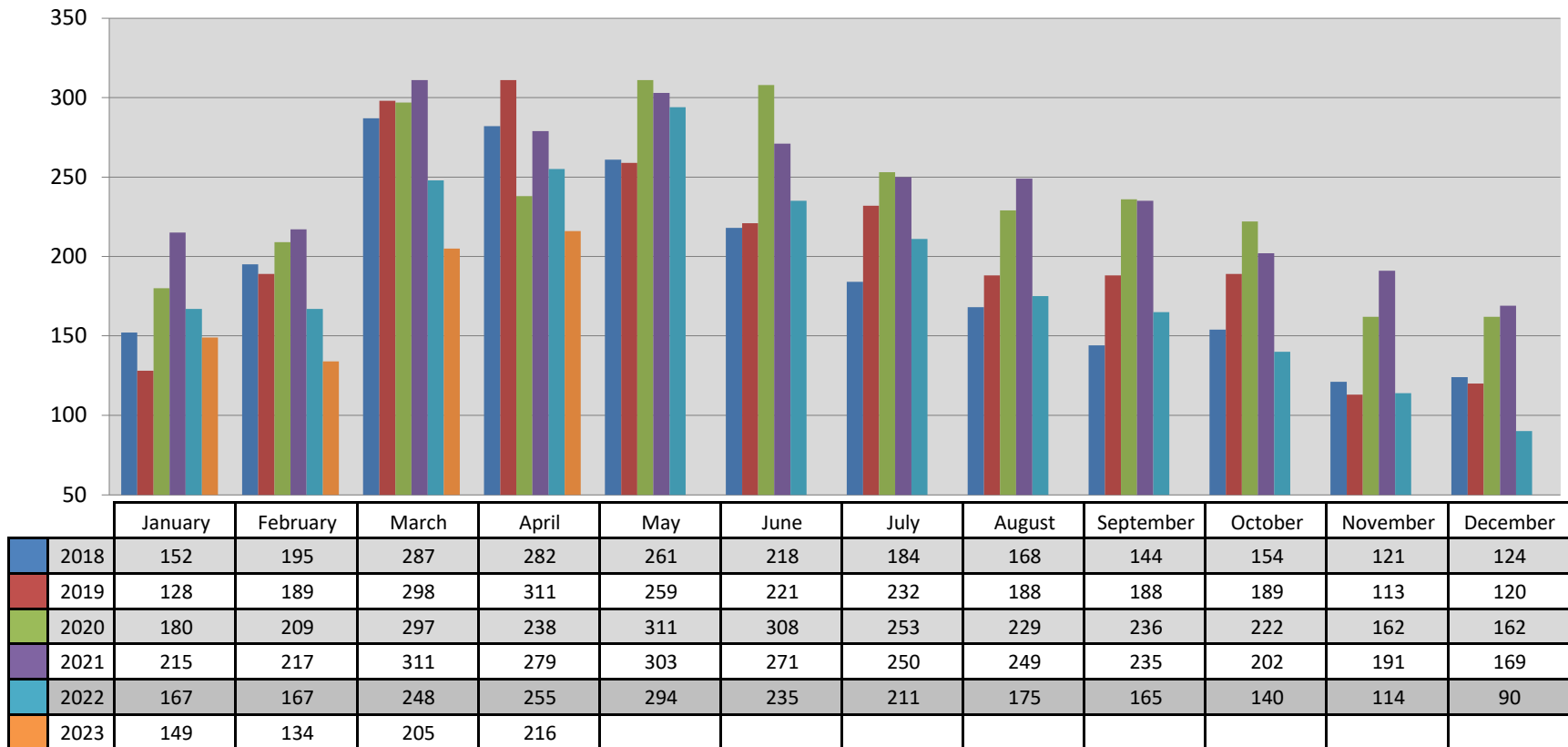
Single Family Homes Average Cumulative Days on Market Per Month in Boone County, MO



This representation is based in whole or in part on the data supplied by the Columbia Board of REALTORS® (CBOR). CBOR does not guarantee nor is in any way responsible for its accuracy. Data maintained by CBOR may not reflect all real estate activity in the market.



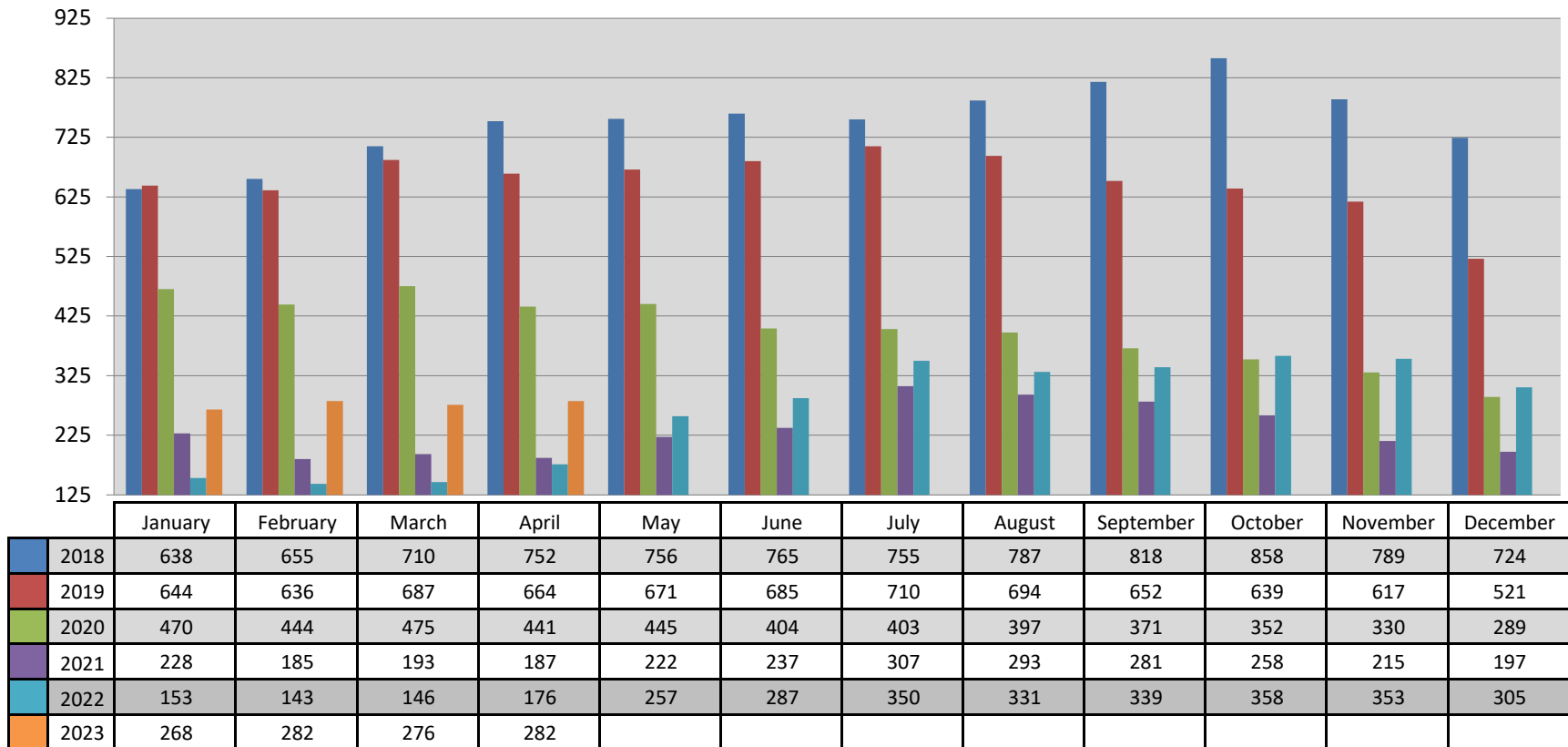
Single Family Pending Listings on Market Per Month in Boone County, MO



This representation is based in whole or in part on the data supplied by the Columbia Board of REALTORS® (CBOR). CBOR does not guarantee nor is in any way responsible for its accuracy. Data maintained by CBOR may not reflect all real estate activity in the market.



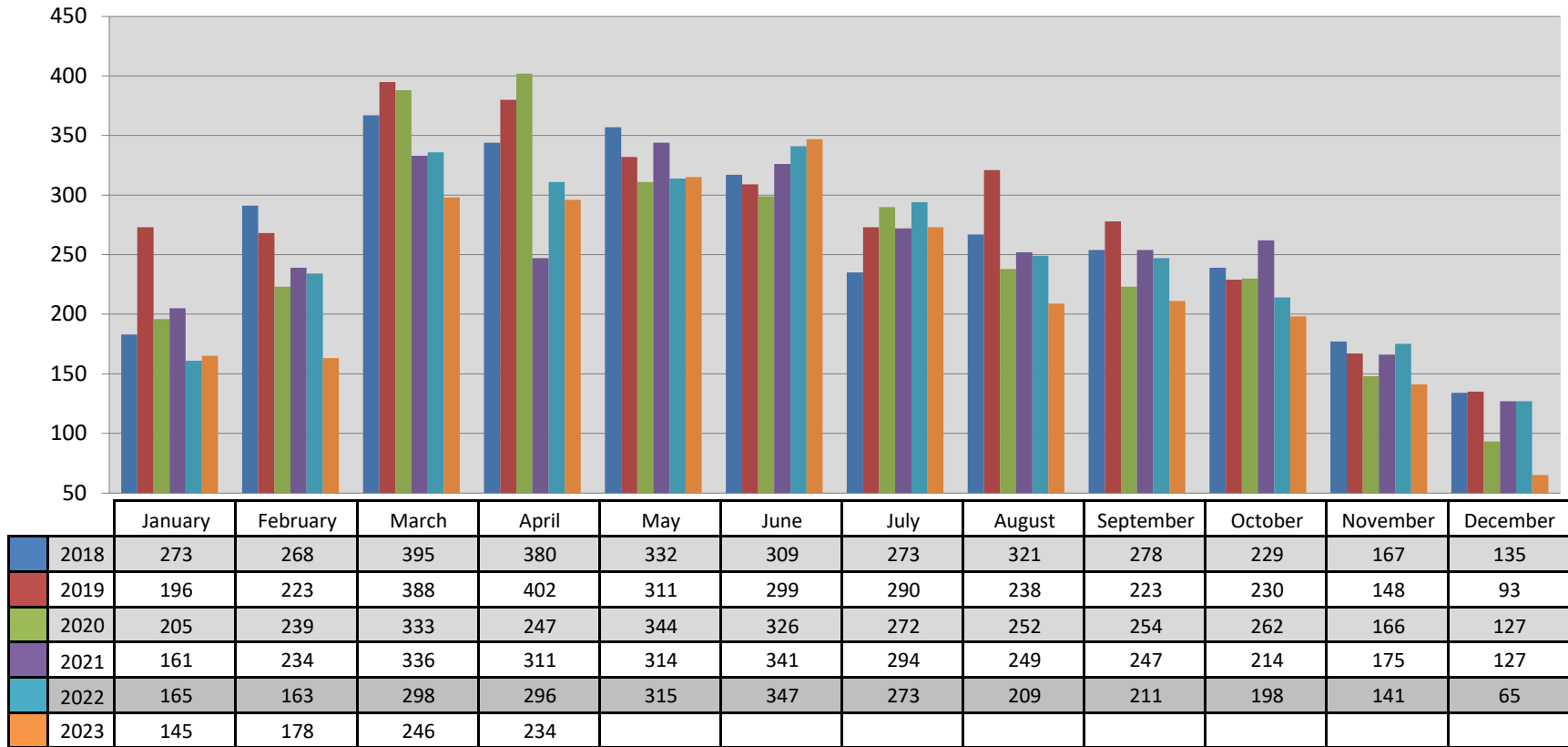
Single Family Active Listings on Market Per Month in Boone County, MO



This representation is based in whole or in part on the data supplied by the Columbia Board of REALTORS® (CBOR). CBOR does not guarantee nor is in any way responsible for its accuracy. Data maintained by CBOR may not reflect all real estate activity in the market.



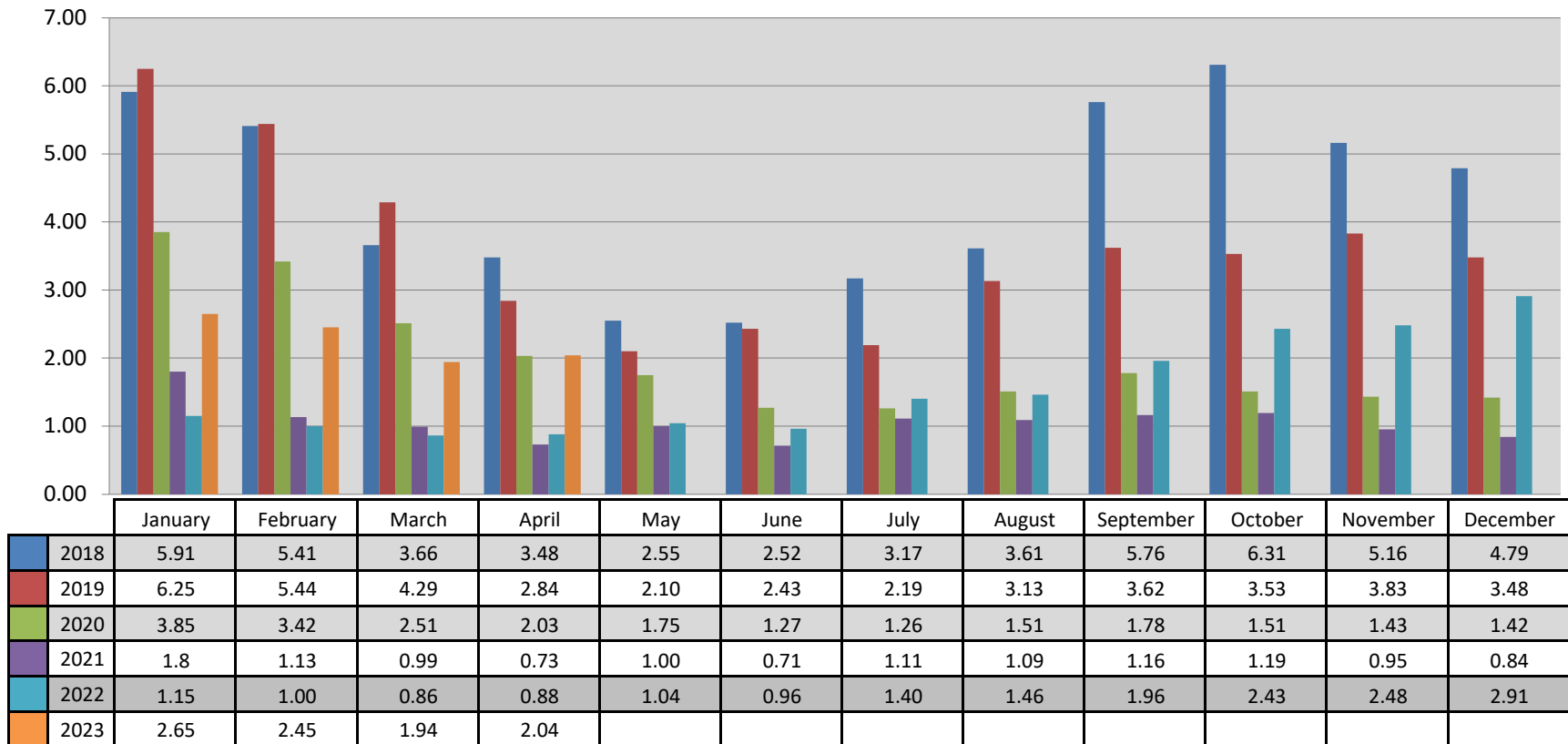
Single Family New Listings Added to Market Per Month in Boone County, MO



This representation is based in whole or in part on the data supplied by the Columbia Board of REALTORS® (CBOR). CBOR does not guarantee nor is in any way responsible for its accuracy. Data maintained by CBOR may not reflect all real estate activity in the market.



Months Supply of Inventory of Single Family Homes in Boone County, MO



This representation is based in whole or in part on the data supplied by the Columbia Board of REALTORS® (CBOR). CBOR does not guarantee nor is in any way responsible for its accuracy. Data maintained by CBOR may not reflect all real estate activity in the market.



April 2023 Sold Single Fam. Homes by Price Range for Boone County, MO

2022

Sold Listings	
List Price Range	# of Listings
\$0-\$99,999	1
\$100,000-\$149,999	8
\$150,000-\$199,999	25
\$200,000-\$249,999	30
\$250,000-\$299,999	37
\$300,000-\$349,999	27
\$350,000-\$399,999	22
\$400,000-\$449,999	10
\$450,000-\$499,999	12
\$500,000-\$749,999	24
\$750,000 - \$999,999	3
\$1,000,000+	1
Total	200

2023

Sold Listings	
List Price Range	# of Listings
\$0-\$99,999	3
\$100,000-\$149,999	6
\$150,000-\$199,999	12
\$200,000-\$249,999	23
\$250,000-\$299,999	23
\$300,000-\$349,999	18
\$350,000-\$399,999	15
\$400,000-\$449,999	7
\$450,000-\$499,999	6
\$500,000-\$749,999	20
\$750,000 - \$999,999	4
\$1,000,000+	1
Total	138

This representation is based in whole or in part on the data supplied by the Columbia Board of REALTORS® (CBOR). CBOR does not guarantee nor is in any way responsible for its accuracy. Data maintained by CBOR may not reflect all real estate activity in the market.



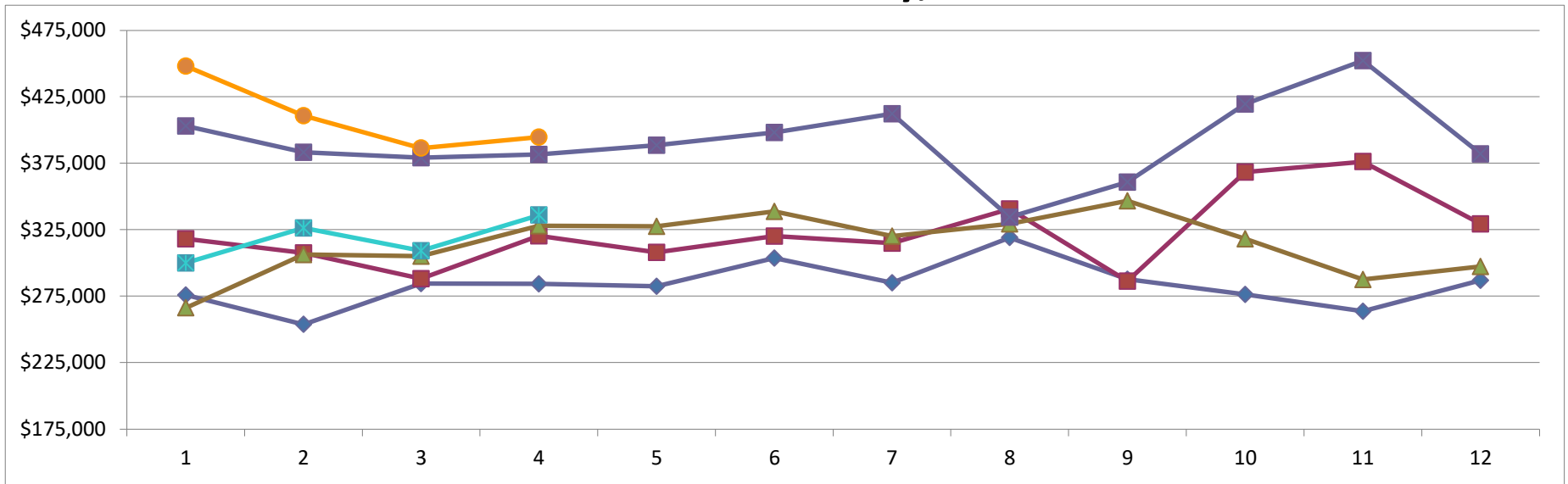
April 2023 Single Family Residence Months Supply of Inventory by Price Range for Boone County, MO

Sold Listings			
List Price Range	# of Months Supply	DOM	CDOM
0-\$99,999	1.00	7	7
\$100,000-\$149,999	1.50	61	61
\$150,000-\$199,999	0.53	23	23
\$200,000-\$249,999	0.78	24	35
\$250,000-\$299,999	1.41	30	45
\$300,000-\$349,999	1.95	30	30
\$350,000-\$399,999	2.55	37	37
\$400,000-\$449,999	3.13	93	93
\$450,000-\$499,999	5.00	13	23
\$500,000-\$749,999	3.05	58	89
\$750,000-\$999,999	4.00	79	123
1,000,000+	6.00	91	91

This representation is based in whole or in part on the data supplied by the Columbia Board of REALTORS® (CBOR). CBOR does not guarantee nor is in any way responsible for its accuracy. Data maintained by CBOR may not reflect all real estate activity in the market.



New Construction Single Family Vs. Existing Homes Average Sold Price Per Month in Boone County, Missouri

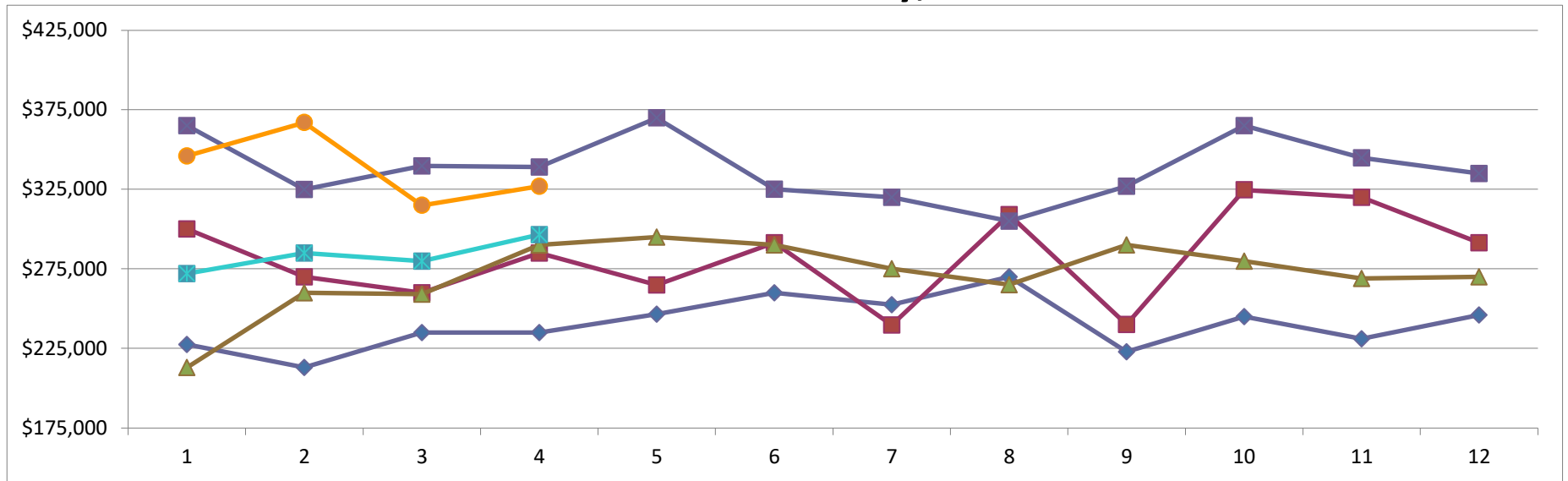


	January	February	March	April	May	June	July	August	September	October	November	December
2021 Existing	\$275,934	\$253,823	\$284,543	\$284,319	\$282,471	\$303,739	\$285,078	\$319,112	\$287,714	\$276,265	\$263,568	\$286,952
2021 New Const	\$318,111	\$307,501	\$288,073	\$320,464	\$308,006	\$320,180	\$314,814	\$340,653	\$286,333	\$368,352	\$376,214	\$329,394
2022 Existing	\$266,206	\$306,356	\$305,154	\$327,851	\$327,617	\$338,795	\$320,248	\$329,398	\$346,792	\$318,053	\$287,517	\$297,234
2022 New Const	\$402,953	\$383,199	\$379,230	\$381,540	\$388,576	\$398,093	\$412,292	\$334,525	\$360,749	\$419,575	\$452,325	\$381,965
2023 Existing	\$299,999	\$326,351	\$309,178	\$336,017								
2023 New Const	\$448,186	\$410,728	\$386,436	\$394,687								

This representation is based in whole or in part on the data supplied by the Columbia Board of REALTORS® (CBOR). CBOR does not guarantee nor is in any way responsible for its accuracy. Data maintained by CBOR may not reflect all real estate activity in the market.



New Construction Single Family Vs. Existing Homes Median Sold Price Per Month in Boone County, Missouri

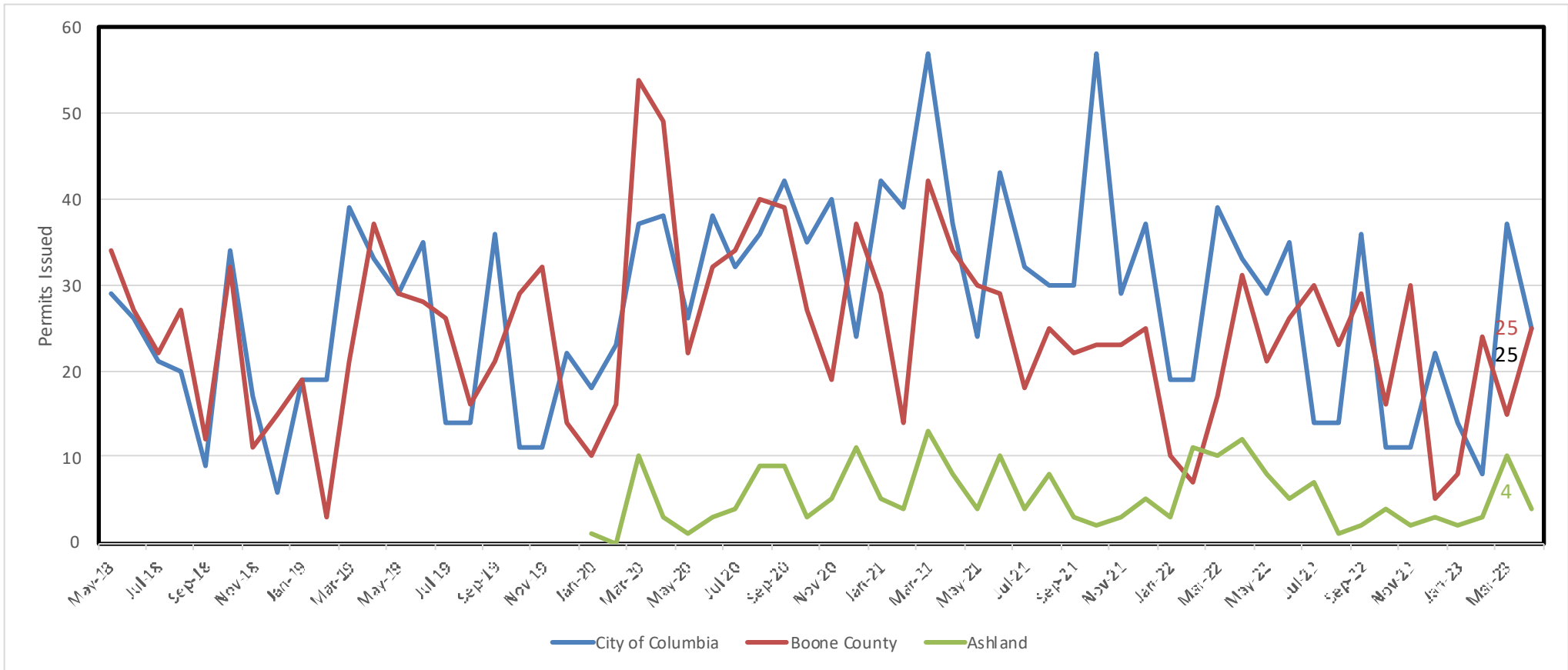


	January	February	March	April	May	June	July	August	September	October	November	December
2021 Existing	\$227,500	\$213,000	\$235,000	\$234,900	\$246,417	\$260,000	\$252,500	\$270,000	\$222,900	\$245,000	\$231,000	\$246,000
2021 New Const	\$300,000	\$270,000	\$259,900	\$285,000	\$264,900	\$291,400	\$239,705	\$309,000	\$240,000	\$324,690	\$319,900	\$291,400
2022 Existing	\$213,000	\$260,000	\$259,000	\$290,000	\$295,000	\$290,000	\$275,000	\$265,000	\$290,000	\$279,875	\$269,000	\$270,000
2022 New Const	\$365,000	\$324,900	\$339,720	\$339,000	\$369,900	\$325,000	\$319,900	\$305,000	\$327,000	\$365,000	\$344,750	\$334,900
2023 Existing	\$272,000	\$285,000	\$279,900	\$296,500								
2023 New Const	\$346,000	\$367,000	\$315,000	\$327,000								

This representation is based in whole or in part on the data supplied by the Columbia Board of REALTORS® (CBOR). CBOR does not guarantee nor is in any way responsible for its accuracy. Data maintained by CBOR may not reflect all real estate activity in the market.



New Residential Single Family Detached Building Permits Issued By City of Columbia, Ashland, & Boone County, MO



This representation is based in whole or in part on the data supplied by the Columbia Board of REALTORS® (CBOR). CBOR does not guarantee nor is in any way responsible for its accuracy. Data maintained by CBOR may not reflect all real estate activity in the market.