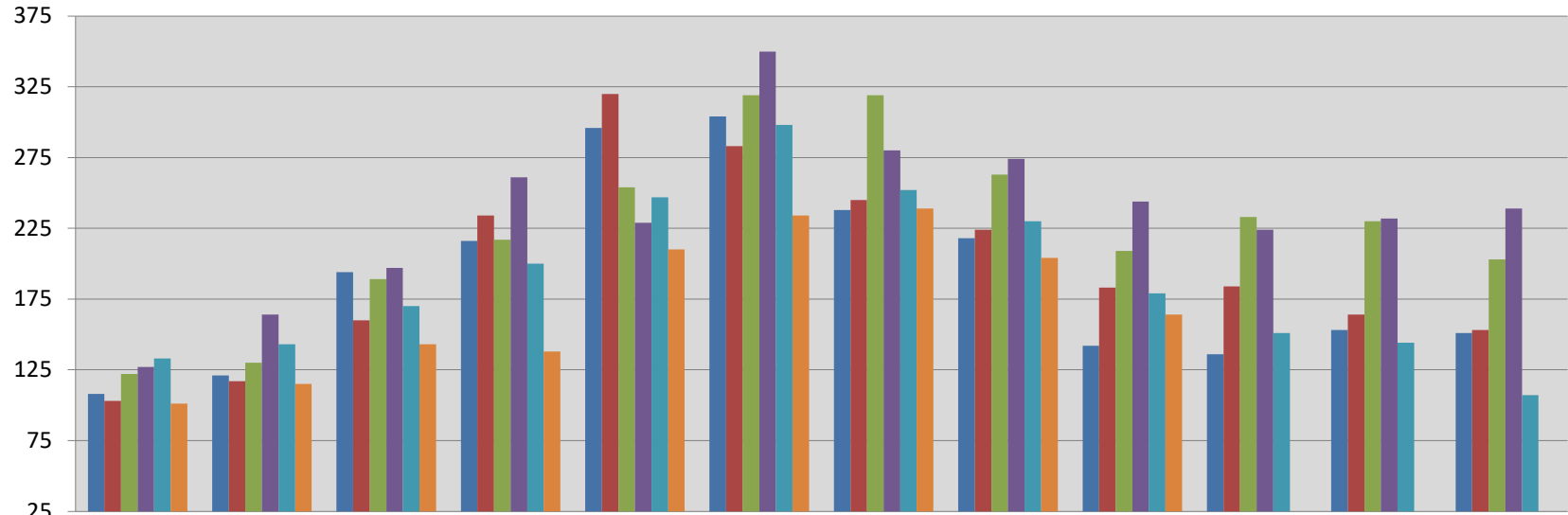




Single Family Homes Sales Per Month in Boone County, Missouri

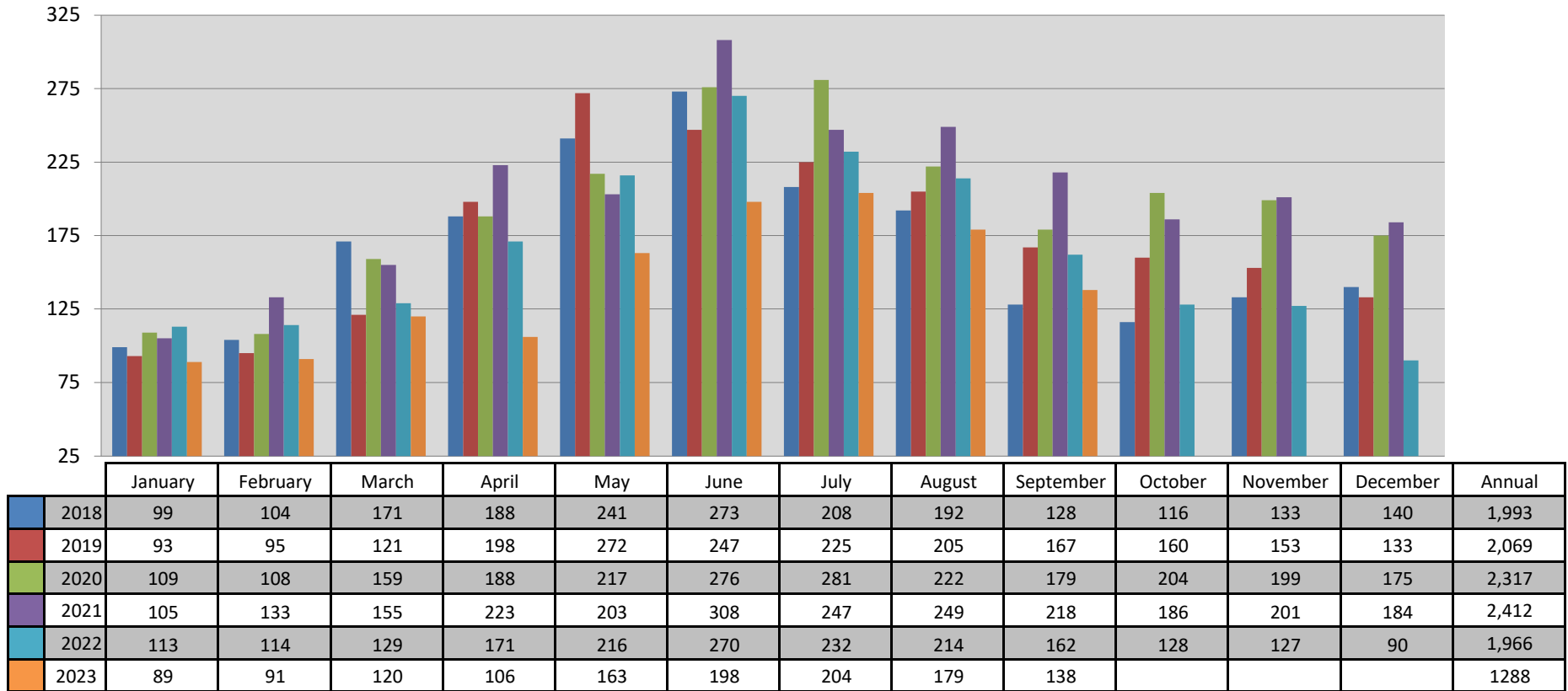


	January	February	March	April	May	June	July	August	September	October	November	December	Annual
2018	108	121	194	216	296	304	238	218	142	136	153	151	2,277
2019	103	117	160	234	320	283	245	224	183	184	164	153	2,370
2020	122	130	189	217	254	319	319	263	209	233	230	203	2,688
2021	127	164	197	261	229	350	280	274	244	224	232	239	2,821
2022	133	143	170	200	247	298	252	230	179	151	144	107	2,254
2023	101	115	143	138	210	234	239	204	164				1548

This representation is based in whole or in part on the data supplied by the Columbia Board of REALTORS® (CBOR). CBOR does not guarantee nor is in any way responsible for its accuracy. Data maintained by CBOR may not reflect all real estate activity in the market.



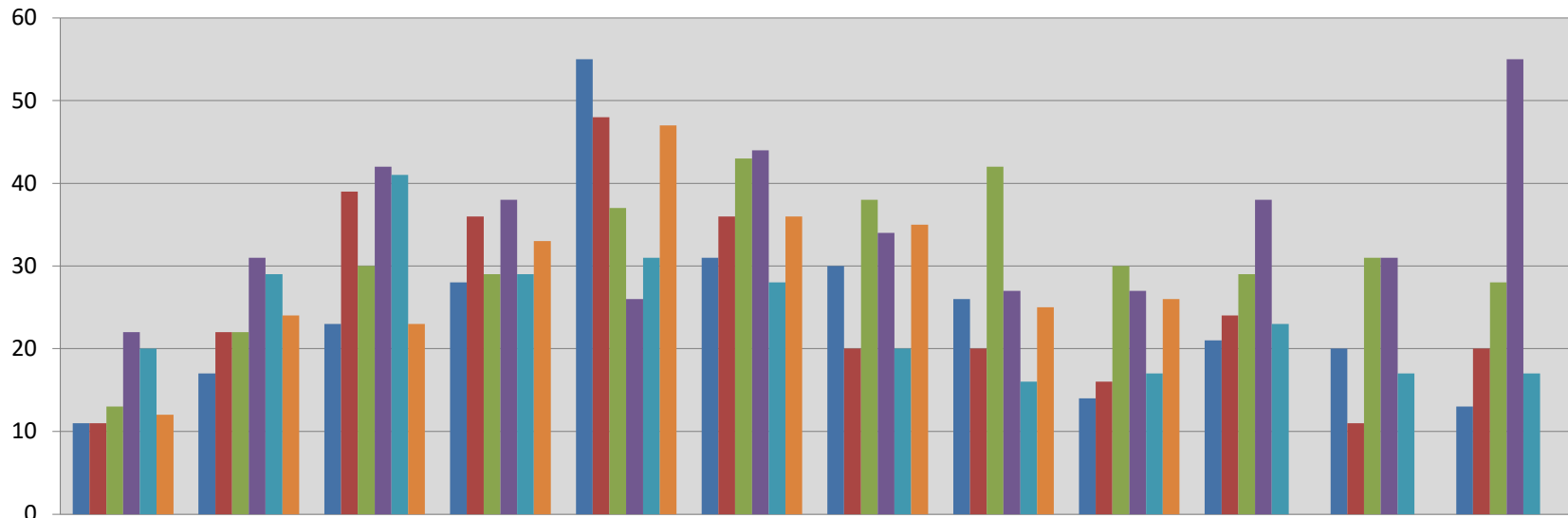
Existing Single Family Homes Sales Per Month in Boone County, Missouri



This representation is based in whole or in part on the data supplied by the Columbia Board of REALTORS® (CBOR). CBOR does not guarantee nor is in any way responsible for its accuracy. Data maintained by CBOR may not reflect all real estate activity in the market.



New Construction Single Family Homes Sales Per Month in Boone County, MO

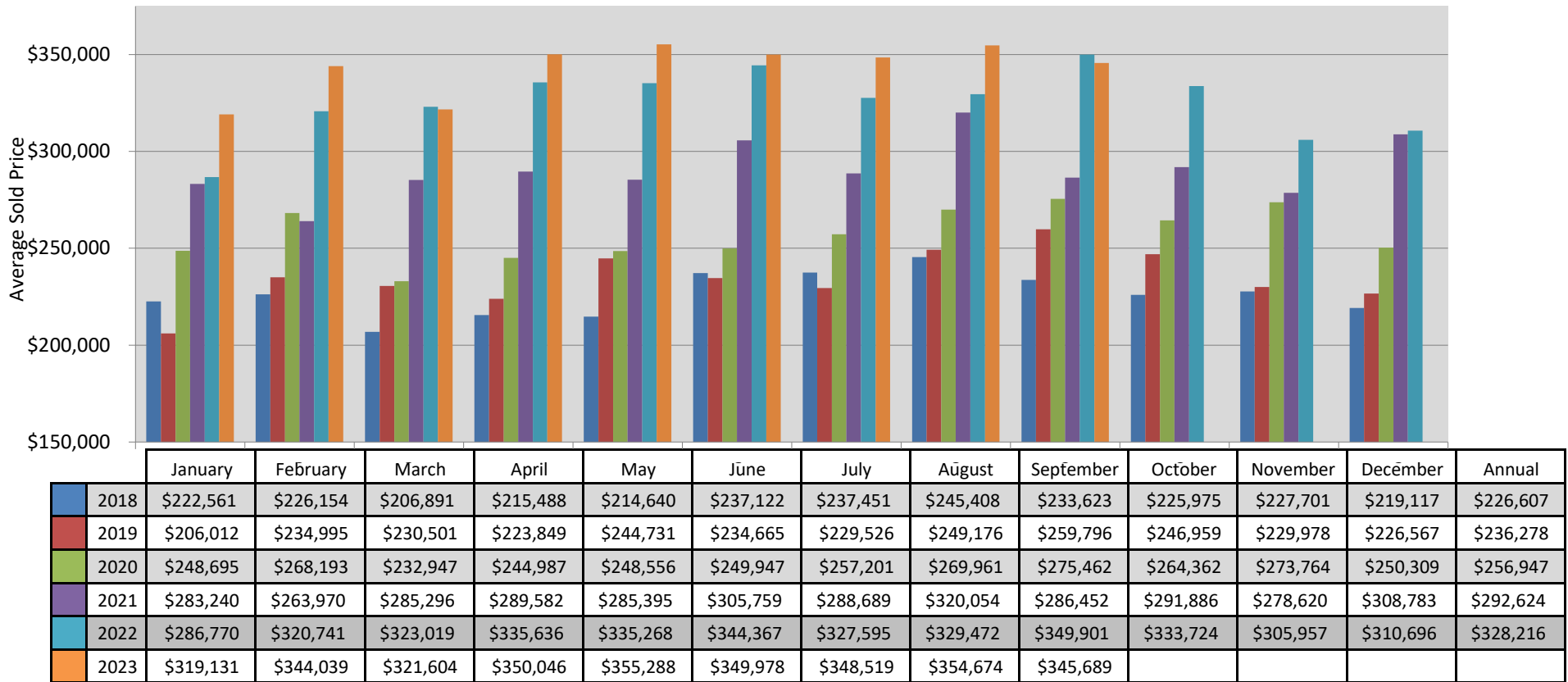


	January	February	March	April	May	June	July	August	September	October	November	December	Annual
2018	11	17	23	28	55	31	30	26	14	21	20	13	289
2019	11	22	39	36	48	36	20	20	16	24	11	20	303
2020	13	22	30	29	37	43	38	42	30	29	31	28	372
2021	22	31	42	38	26	44	34	27	27	38	31	55	415
2022	20	29	41	29	31	28	20	16	17	23	17	17	288
2023	12	24	23	33	47	36	35	25	26				261

This representation is based in whole or in part on the data supplied by the Columbia Board of REALTORS® (CBOR). CBOR does not guarantee nor is in any way responsible for its accuracy. Data maintained by CBOR may not reflect all real estate activity in the market.



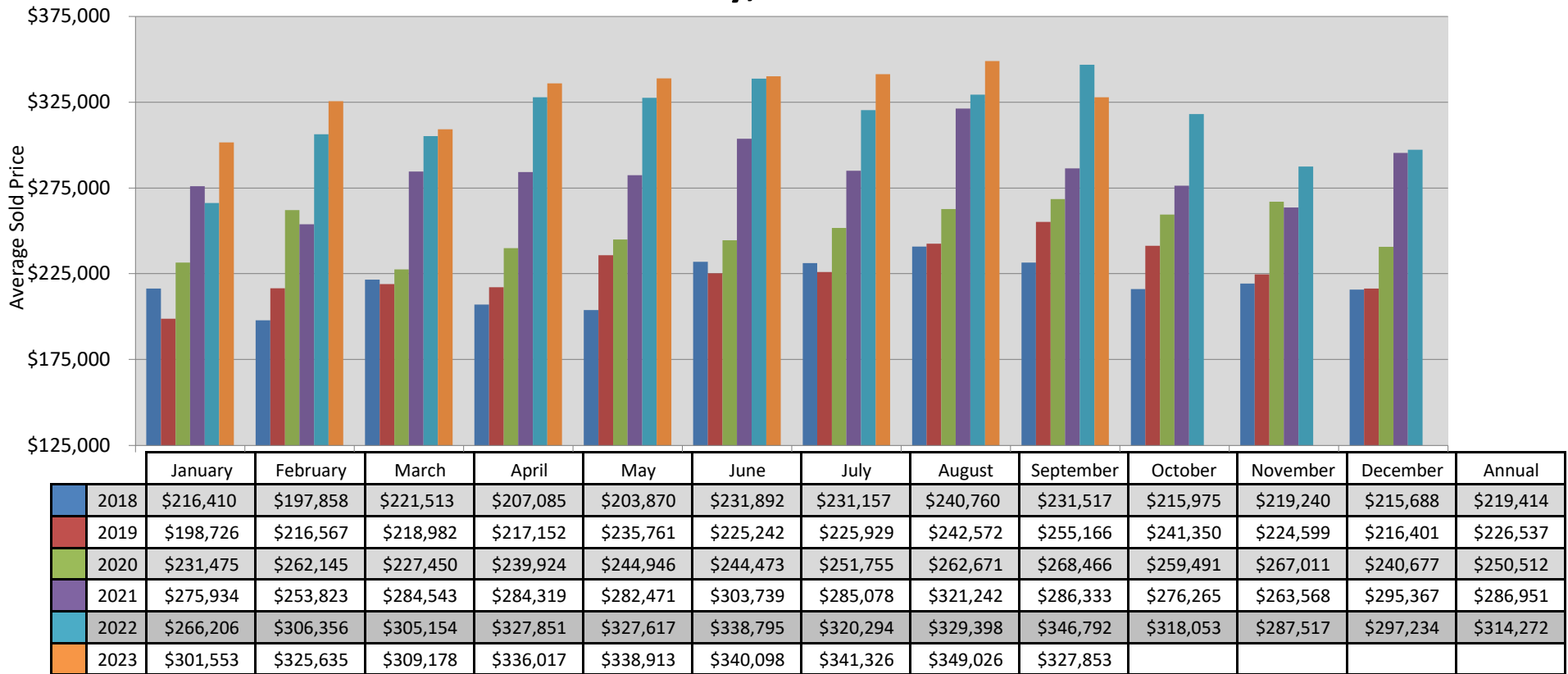
Single Family Homes Average Sold Price Per Month in Boone County, Missouri



This representation is based in whole or in part on the data supplied by the Columbia Board of REALTORS® (CBOR). CBOR does not guarantee nor is in any way responsible for its accuracy. Data maintained by CBOR may not reflect all real estate activity in the market.



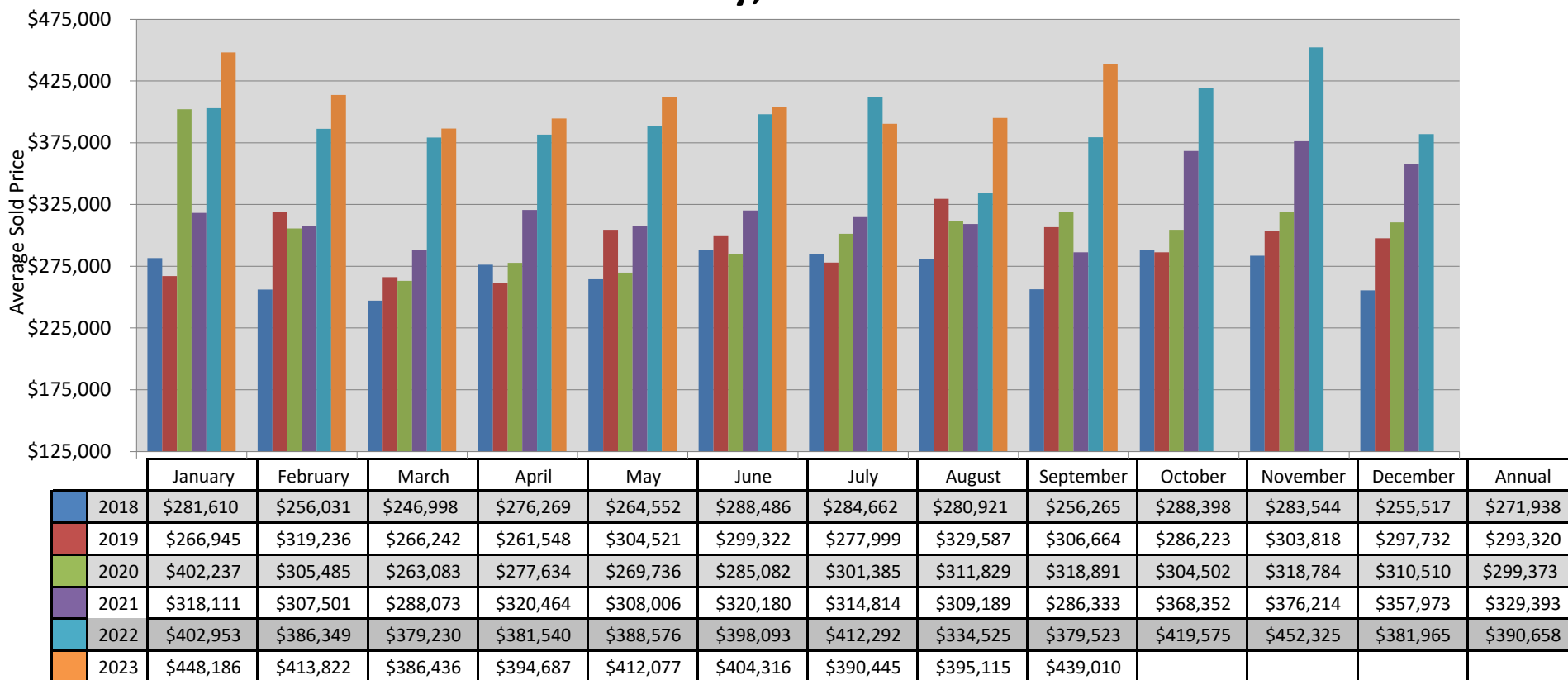
Existing Single Family Homes Average Sold Price Per Month in Boone County, Missouri



This representation is based in whole or in part on the data supplied by the Columbia Board of REALTORS® (CBOR). CBOR does not guarantee nor is in any way responsible for its accuracy. Data maintained by CBOR may not reflect all real estate activity in the market.



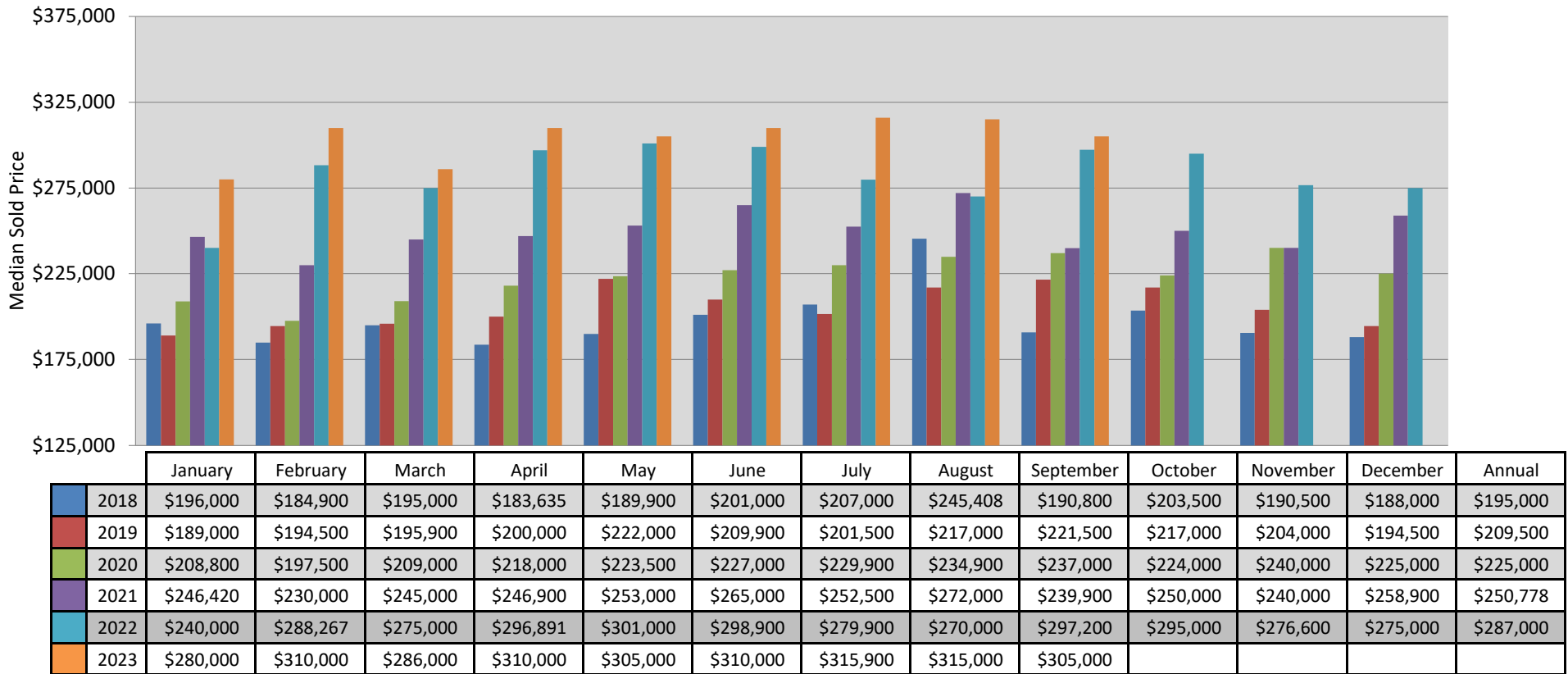
New Construction Single Family Homes Average Sold Price Per Month in Boone County, Missouri



This representation is based in whole or in part on the data supplied by the Columbia Board of REALTORS® (CBOR). CBOR does not guarantee nor is in any way responsible for its accuracy. Data maintained by CBOR may not reflect all real estate activity in the market.



Single Family Homes Median Sold Price Per Month in Boone County, Missouri



This representation is based in whole or in part on the data supplied by the Columbia Board of REALTORS® (CBOR). CBOR does not guarantee nor is in any way responsible for its accuracy. Data maintained by CBOR may not reflect all real estate activity in the market.



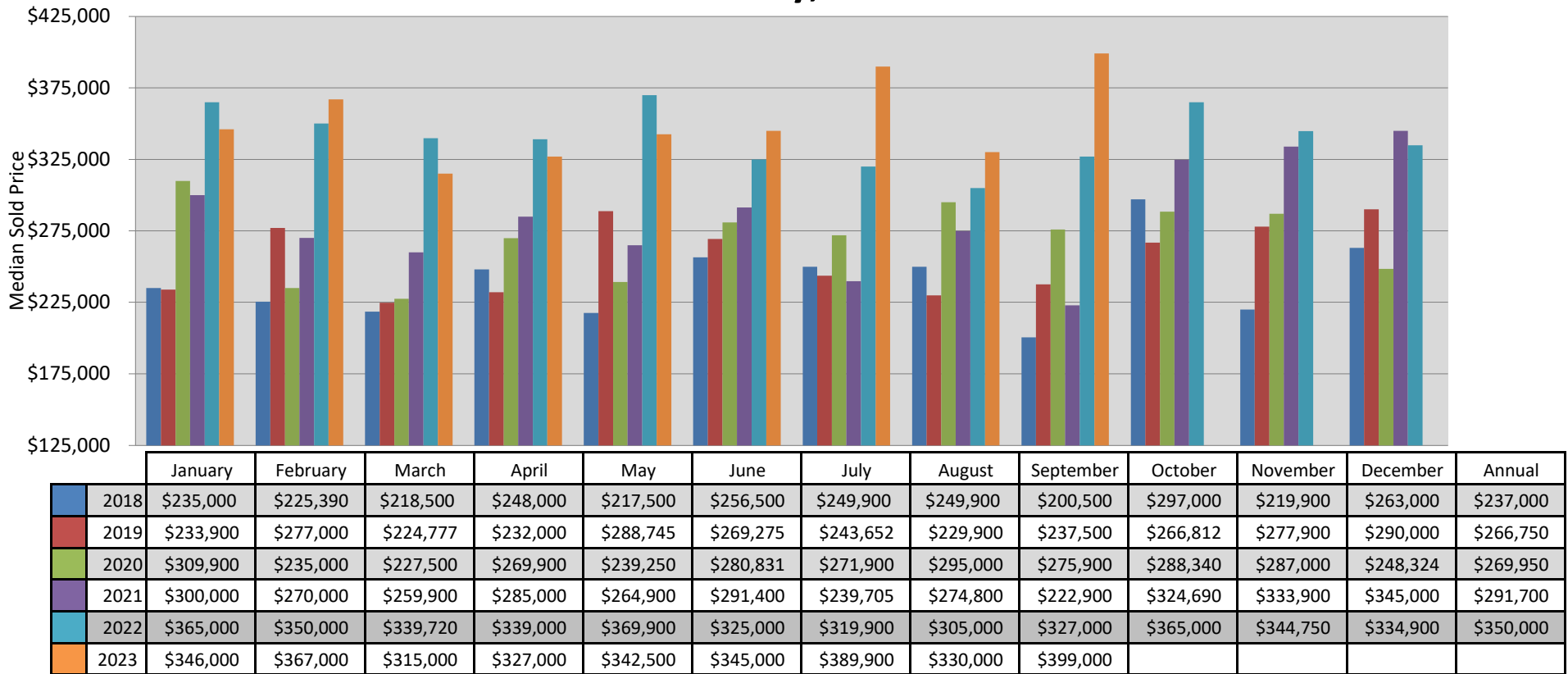
Existing Single Family Homes Median Sold Price Per Month in Boone County, Missouri



This representation is based in whole or in part on the data supplied by the Columbia Board of REALTORS® (CBOR). CBOR does not guarantee nor is in any way responsible for its accuracy. Data maintained by CBOR may not reflect all real estate activity in the market.



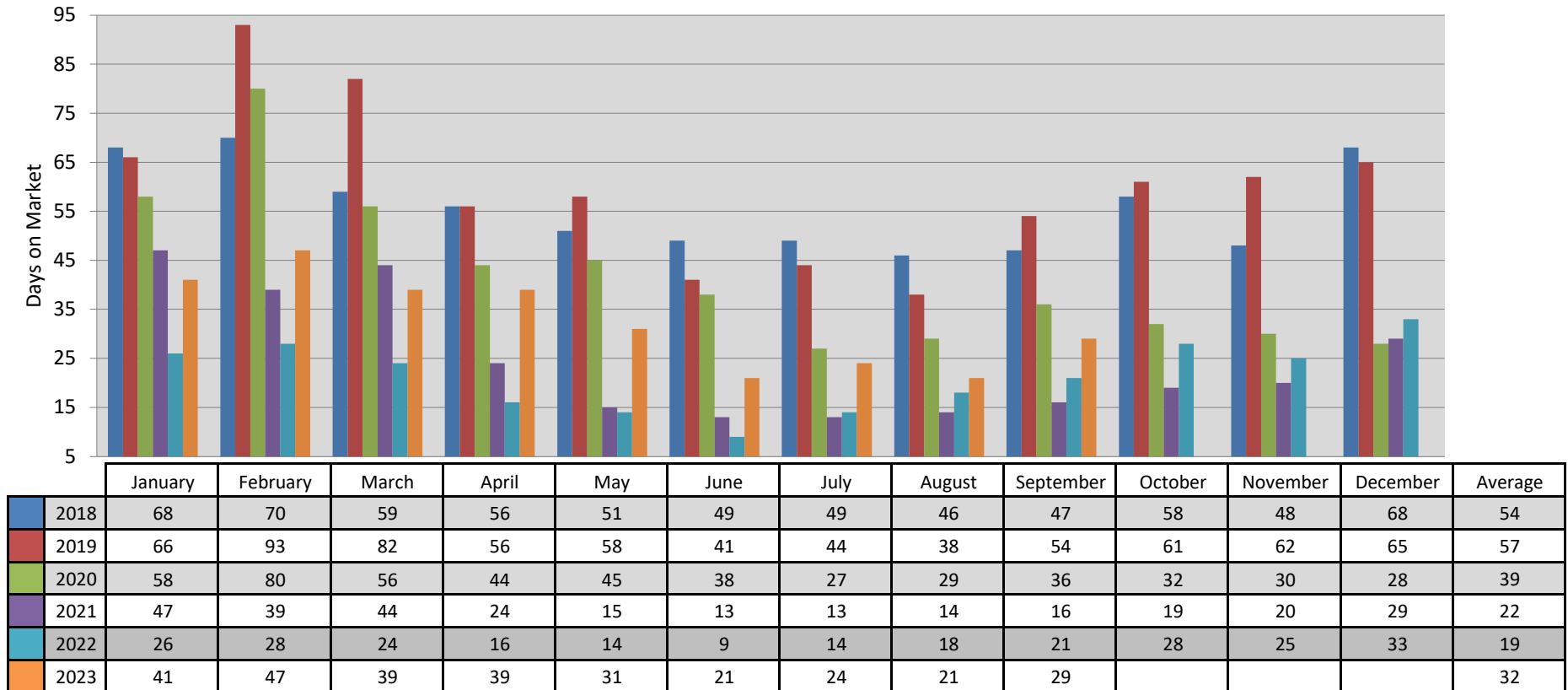
New Construction Single Family Homes Median Sold Price Per Month in Boone County, Missouri



This representation is based in whole or in part on the data supplied by the Columbia Board of REALTORS® (CBOR). CBOR does not guarantee nor is in any way responsible for its accuracy. Data maintained by CBOR may not reflect all real estate activity in the market.



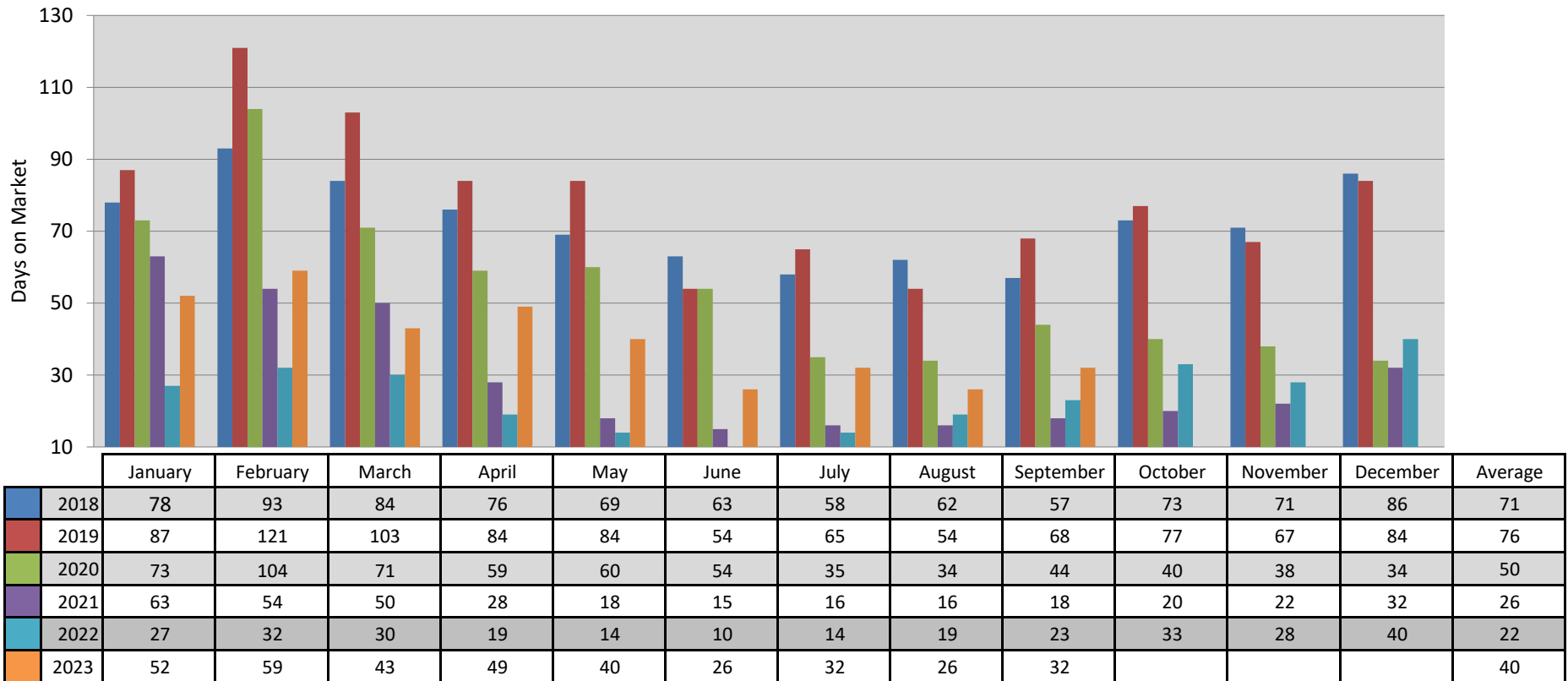
Single Family Homes Average Days on Market Per Month in Boone County, MO



This representation is based in whole or in part on the data supplied by the Columbia Board of REALTORS® (CBOR). CBOR does not guarantee nor is in any way responsible for its accuracy. Data maintained by CBOR may not reflect all real estate activity in the market.



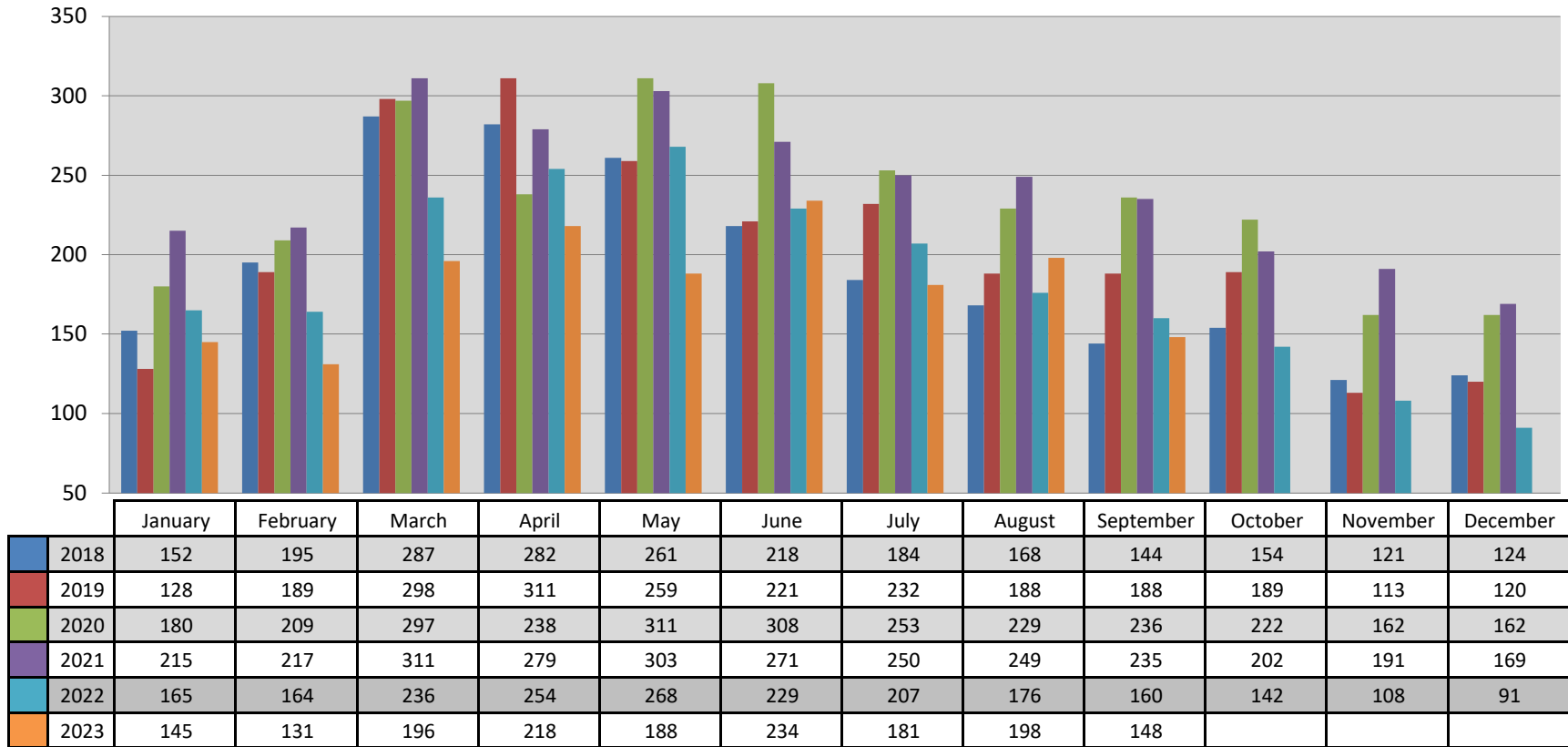
Single Family Homes Average Cumulative Days on Market Per Month in Boone County, MO



This representation is based in whole or in part on the data supplied by the Columbia Board of REALTORS® (CBOR). CBOR does not guarantee nor is in any way responsible for its accuracy. Data maintained by CBOR may not reflect all real estate activity in the market.



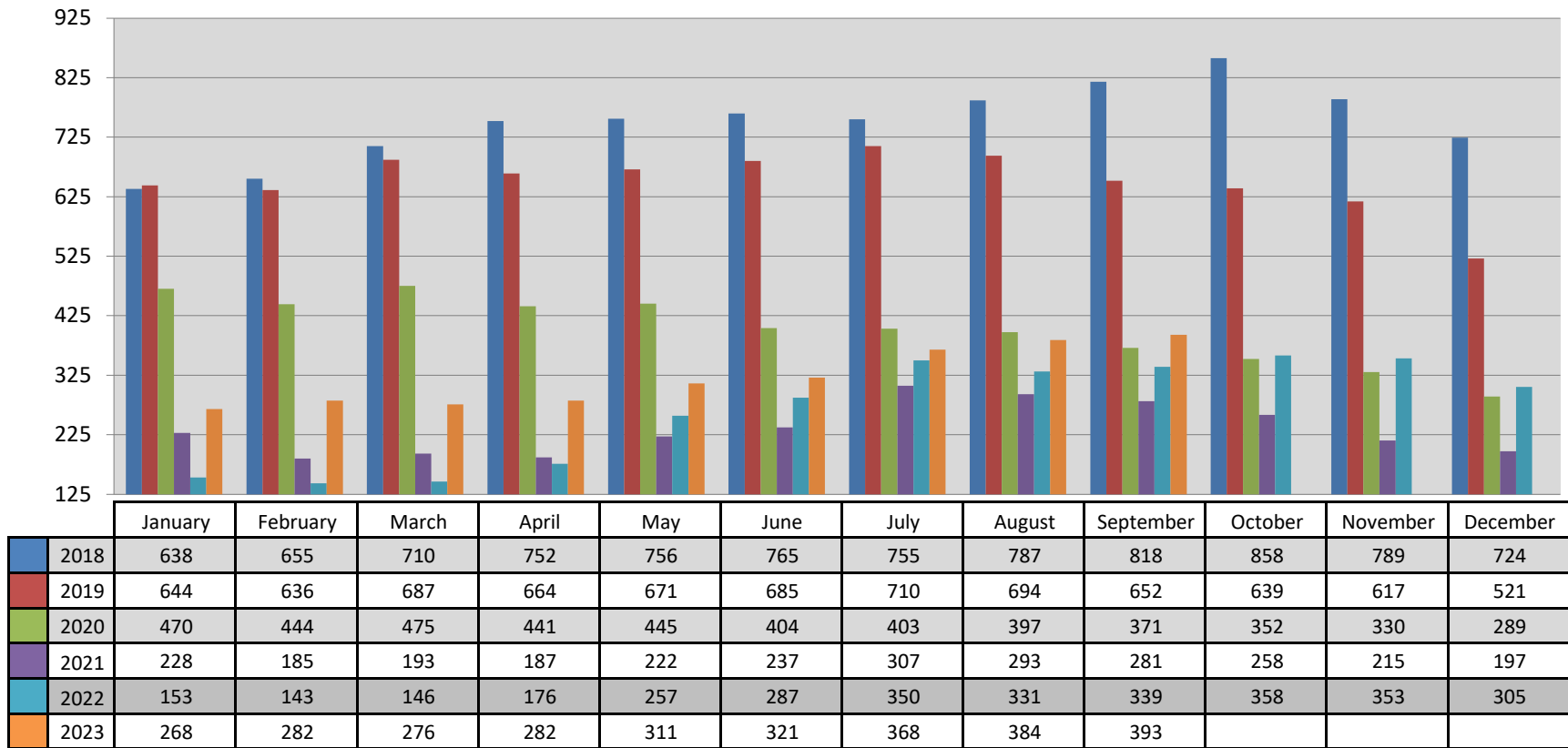
Single Family Pending Listings on Market Per Month in Boone County, MO



This representation is based in whole or in part on the data supplied by the Columbia Board of REALTORS® (CBOR). CBOR does not guarantee nor is in any way responsible for its accuracy. Data maintained by CBOR may not reflect all real estate activity in the market.



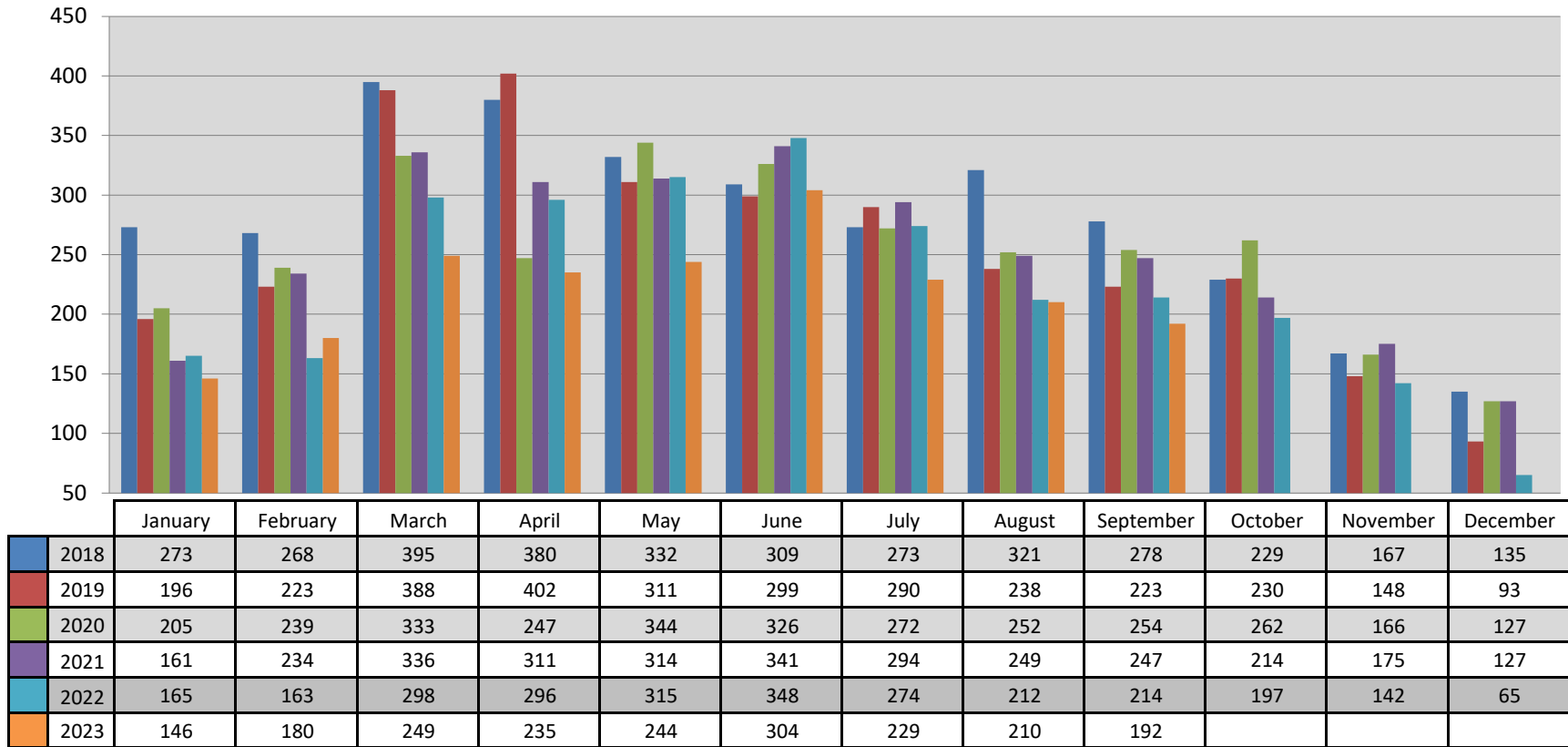
Single Family Active Listings on Market Per Month in Boone County, MO



This representation is based in whole or in part on the data supplied by the Columbia Board of REALTORS® (CBOR). CBOR does not guarantee nor is in any way responsible for its accuracy. Data maintained by CBOR may not reflect all real estate activity in the market.



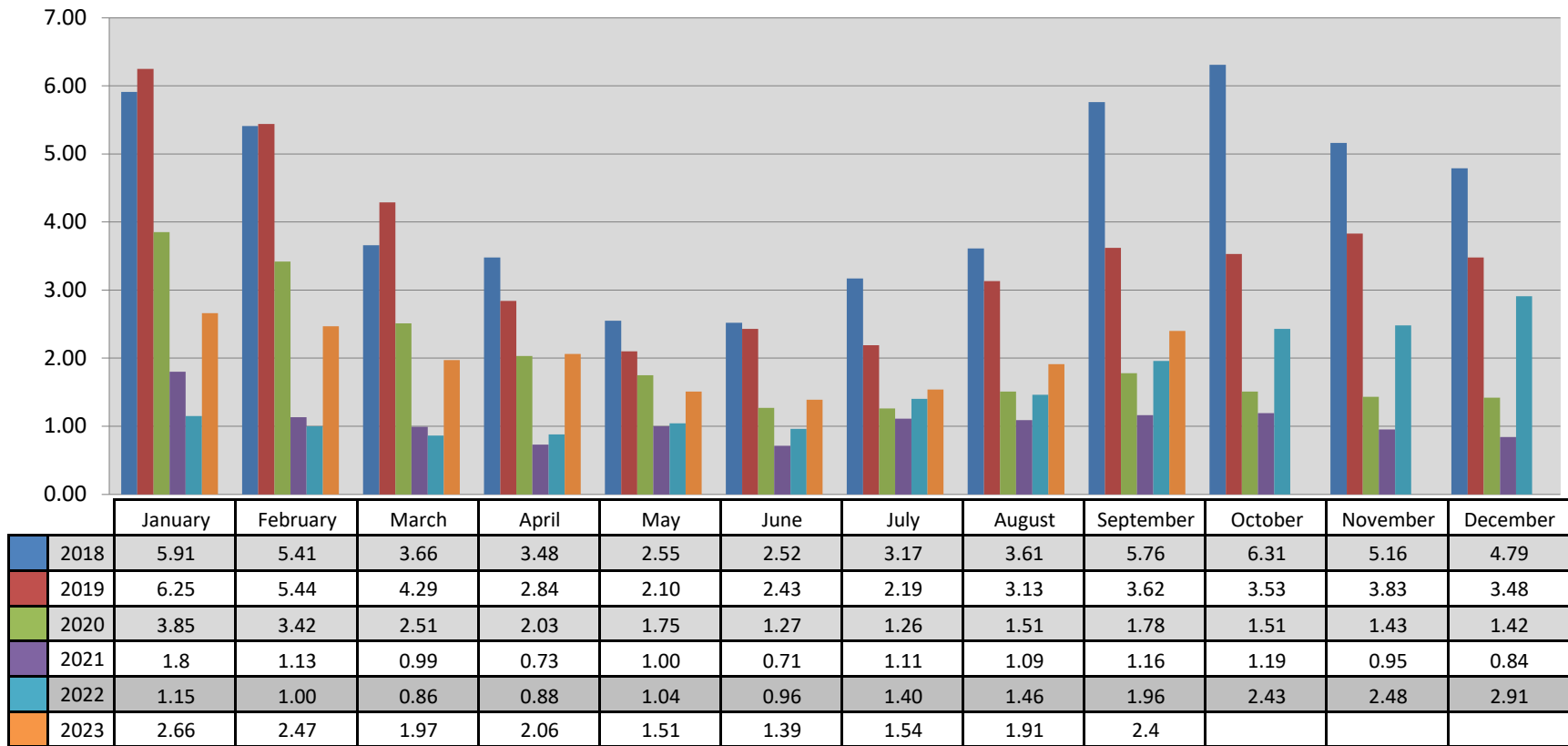
Single Family New Listings Added to Market Per Month in Boone County, MO



This representation is based in whole or in part on the data supplied by the Columbia Board of REALTORS® (CBOR). CBOR does not guarantee nor is in any way responsible for its accuracy. Data maintained by CBOR may not reflect all real estate activity in the market.



Months Supply of Inventory of Single Family Homes in Boone County, MO



This representation is based in whole or in part on the data supplied by the Columbia Board of REALTORS® (CBOR). CBOR does not guarantee nor is in any way responsible for its accuracy. Data maintained by CBOR may not reflect all real estate activity in the market.



September 2023 Sold Single Fam. Homes by Price Range for Boone County, MO

2022

Sold Listings	
List Price Range	# of Listings
\$0-\$99,999	2
\$100,000-\$149,999	11
\$150,000-\$199,999	17
\$200,000-\$249,999	25
\$250,000-\$299,999	39
\$300,000-\$349,999	26
\$350,000-\$399,999	20
\$400,000-\$449,999	4
\$450,000-\$499,999	9
\$500,000-\$749,999	20
\$750,000 - \$999,999	3
\$1,000,000+	3
Total	179

2023

Sold Listings	
List Price Range	# of Listings
\$0-\$99,999	4
\$100,000-\$149,999	8
\$150,000-\$199,999	16
\$200,000-\$249,999	26
\$250,000-\$299,999	27
\$300,000-\$349,999	20
\$350,000-\$399,999	16
\$400,000-\$449,999	13
\$450,000-\$499,999	10
\$500,000-\$749,999	18
\$750,000 - \$999,999	2
\$1,000,000+	4
Total	164

This representation is based in whole or in part on the data supplied by the Columbia Board of REALTORS® (CBOR). CBOR does not guarantee nor is in any way responsible for its accuracy. Data maintained by CBOR may not reflect all real estate activity in the market.



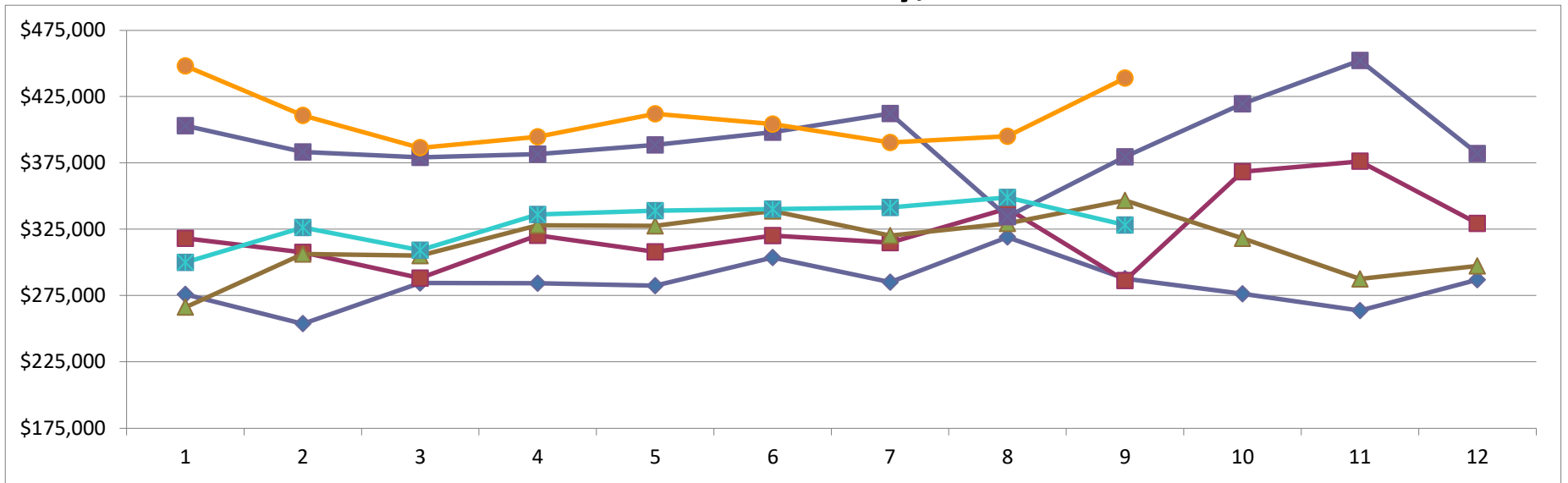
September 2023 Single Family Residence Months Supply of Inventory by Price Range for Boone County, MO

List Price Range	# of Months Supply	DOM	CDOM
0-\$99,999	0.50	15	15
\$100,000-\$149,999	1.25	20	20
\$150,000-\$199,999	1.56	20	20
\$200,000-\$249,999	0.92	15	15
\$250,000-\$299,999	1.74	16	19
\$300,000-\$349,999	2.45	24	27
\$350,000-\$399,999	2.63	55	64
\$400,000-\$449,999	3.38	23	36
\$450,000-\$499,999	3.60	70	70
\$500,000-\$749,999	4.17	33	33
\$750,000-\$999,999	13.00	35	35
1,000,000+	3.25	90	90

This representation is based in whole or in part on the data supplied by the Columbia Board of REALTORS® (CBOR). CBOR does not guarantee nor is in any way responsible for its accuracy. Data maintained by CBOR may not reflect all real estate activity in the market.



New Construction Single Family Vs. Existing Homes Average Sold Price Per Month in Boone County, Missouri

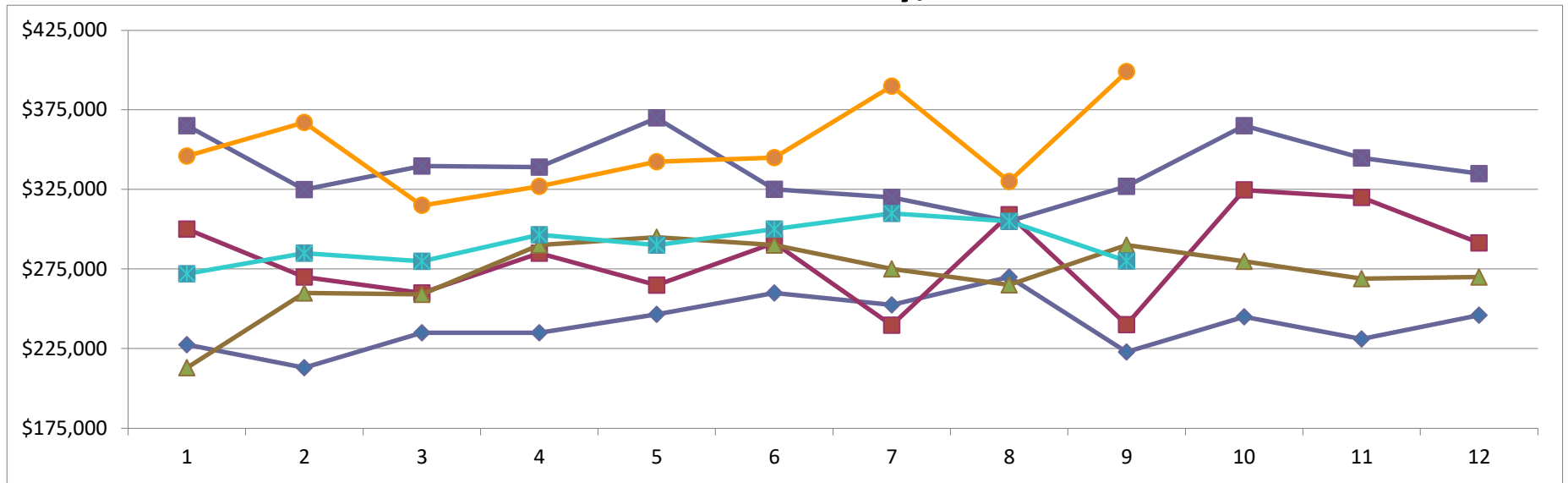


	January	February	March	April	May	June	July	August	September	October	November	December
2021 Existing	\$275,934	\$253,823	\$284,543	\$284,319	\$282,471	\$303,739	\$285,078	\$319,112	\$287,714	\$276,265	\$263,568	\$286,952
2021 New Const	\$318,111	\$307,501	\$288,073	\$320,464	\$308,006	\$320,180	\$314,814	\$340,653	\$286,333	\$368,352	\$376,214	\$329,394
2022 Existing	\$266,206	\$306,356	\$305,154	\$327,851	\$327,617	\$338,795	\$320,248	\$329,398	\$346,792	\$318,053	\$287,517	\$297,234
2022 New Const	\$402,953	\$383,199	\$379,230	\$381,540	\$388,576	\$398,093	\$412,292	\$334,525	\$379,523	\$419,575	\$452,325	\$381,965
2023 Existing	\$299,999	\$326,351	\$309,178	\$336,017	\$338,913	\$340,098	\$341,326	\$349,026	\$328,107			
2023 New Const	\$448,186	\$410,728	\$386,436	\$394,687	\$412,077	\$404,316	\$390,445	\$395,115	\$439,010			

This representation is based in whole or in part on the data supplied by the Columbia Board of REALTORS® (CBOR). CBOR does not guarantee nor is in any way responsible for its accuracy. Data maintained by CBOR may not reflect all real estate activity in the market.



New Construction Single Family Vs. Existing Homes Median Sold Price Per Month in Boone County, Missouri

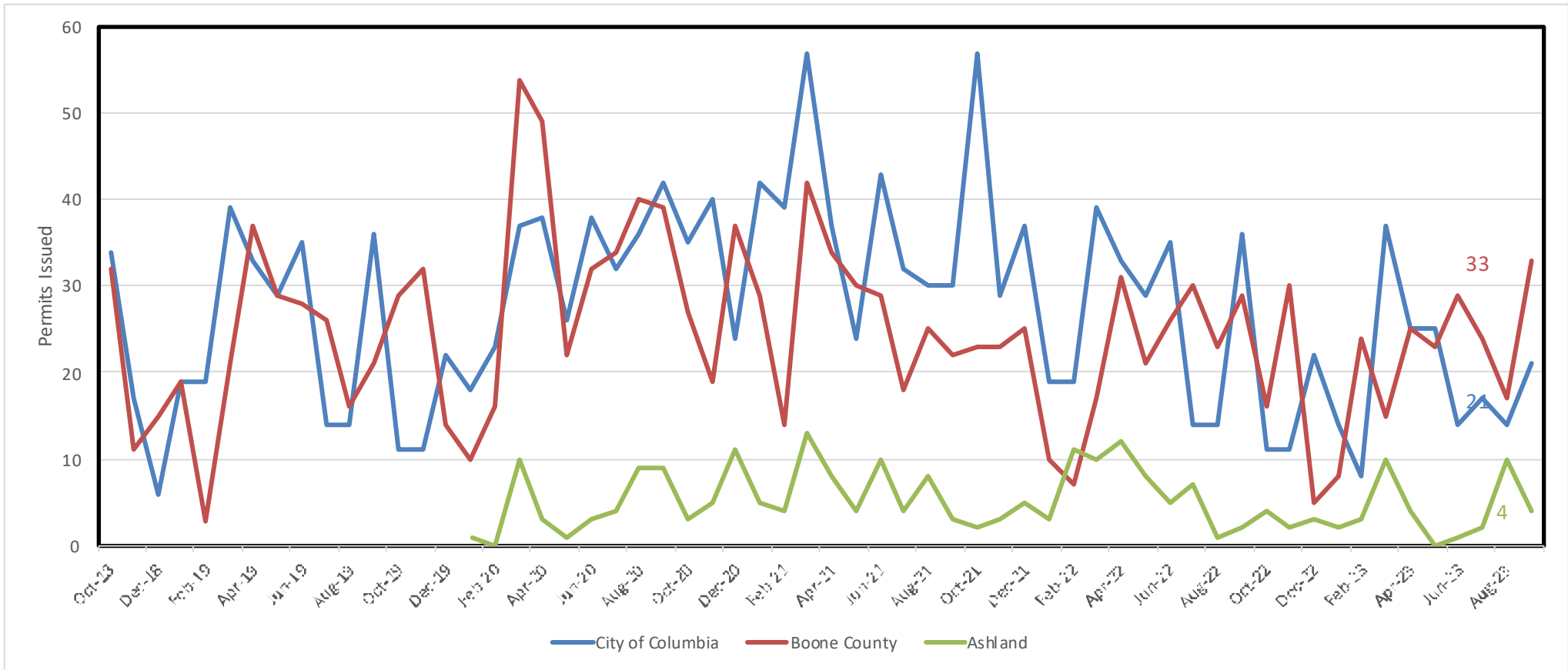


	January	February	March	April	May	June	July	August	September	October	November	December
2021 Existing	\$227,500	\$213,000	\$235,000	\$234,900	\$246,417	\$260,000	\$252,500	\$270,000	\$222,900	\$245,000	\$231,000	\$246,000
2021 New Const	\$300,000	\$270,000	\$259,900	\$285,000	\$264,900	\$291,400	\$239,705	\$309,000	\$240,000	\$324,690	\$319,900	\$291,400
2022 Existing	\$213,000	\$260,000	\$259,000	\$290,000	\$295,000	\$290,000	\$275,000	\$265,000	\$290,000	\$279,875	\$269,000	\$270,000
2022 New Const	\$365,000	\$324,900	\$339,720	\$339,000	\$369,900	\$325,000	\$319,900	\$305,000	\$327,000	\$365,000	\$344,750	\$334,900
2023 Existing	\$272,000	\$285,000	\$279,900	\$296,500	\$290,000	\$300,000	\$310,000	\$305,000	\$280,000			
2023 New Const	\$346,000	\$367,000	\$315,000	\$327,000	\$342,500	\$345,000	\$389,900	\$330,000	\$399,000			

This representation is based in whole or in part on the data supplied by the Columbia Board of REALTORS® (CBOR). CBOR does not guarantee nor is in any way responsible for its accuracy. Data maintained by CBOR may not reflect all real estate activity in the market.



New Residential Single Family Detached Building Permits Issued By City of Columbia, Ashland, & Boone County, MO



This representation is based in whole or in part on the data supplied by the Columbia Board of REALTORS® (CBOR). CBOR does not guarantee nor is in any way responsible for its accuracy. Data maintained by CBOR may not reflect all real estate activity in the market.