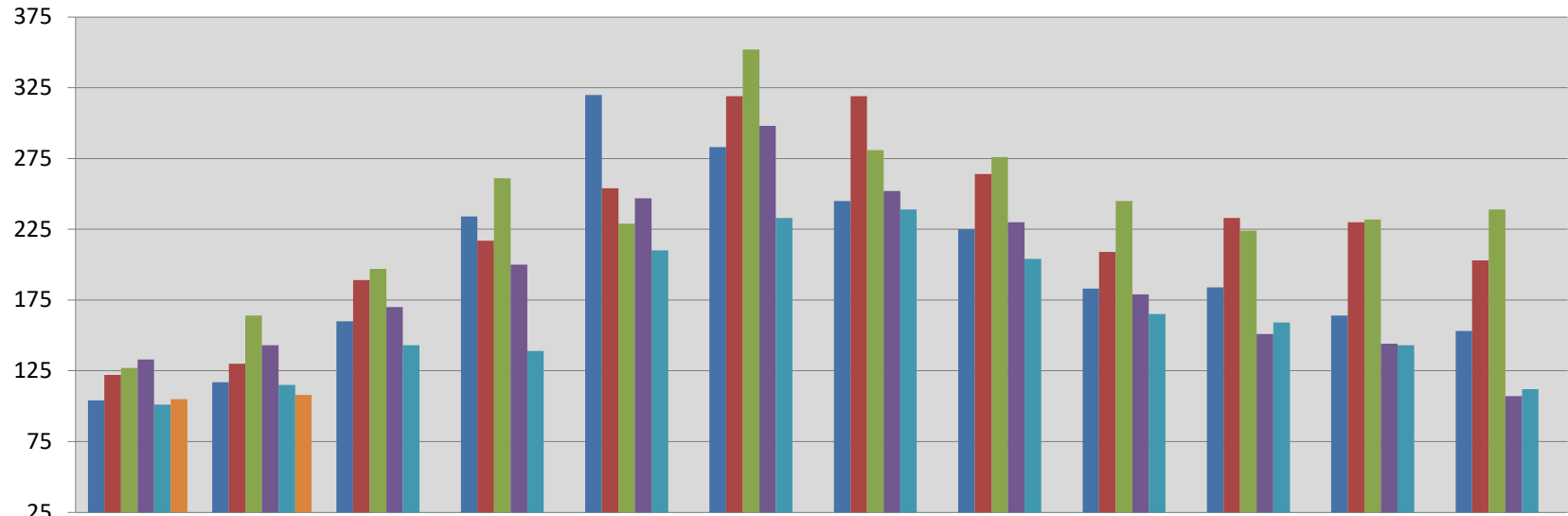




Single Family Homes Sales Per Month in Boone County, Missouri

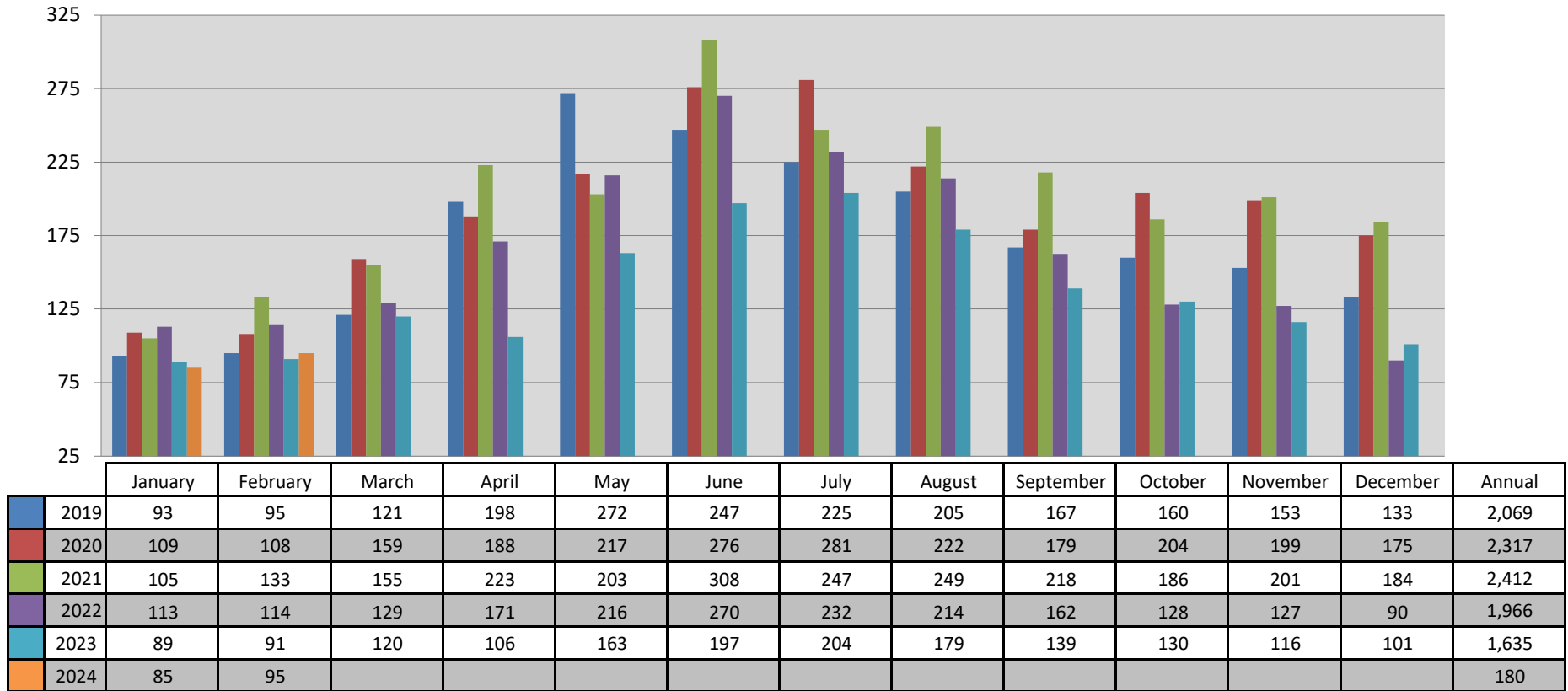


	January	February	March	April	May	June	July	August	September	October	November	December	Annual
2019	104	117	160	234	320	283	245	225	183	184	164	153	2,372
2020	122	130	189	217	254	319	319	264	209	233	230	203	2,689
2021	127	164	197	261	229	352	281	276	245	224	232	239	2,827
2022	133	143	170	200	247	298	252	230	179	151	144	107	2,254
2023	101	115	143	139	210	233	239	204	165	159	143	112	1,963
2024	105	108											213

This representation is based in whole or in part on the data supplied by the Columbia Board of REALTORS® (CBOR). CBOR does not guarantee nor is in any way responsible for its accuracy. Data maintained by CBOR may not reflect all real estate activity in the market.



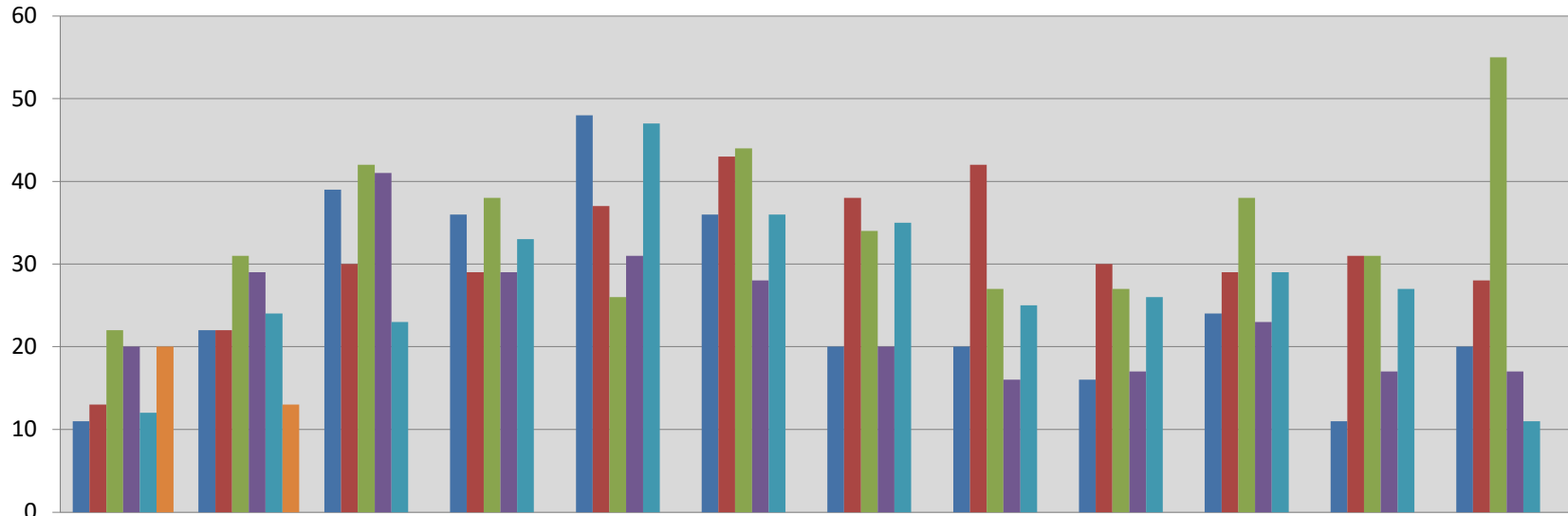
Existing Single Family Homes Sales Per Month in Boone County, Missouri



This representation is based in whole or in part on the data supplied by the Columbia Board of REALTORS® (CBOR). CBOR does not guarantee nor is in any way responsible for its accuracy. Data maintained by CBOR may not reflect all real estate activity in the market.



New Construction Single Family Homes Sales Per Month in Boone County, MO

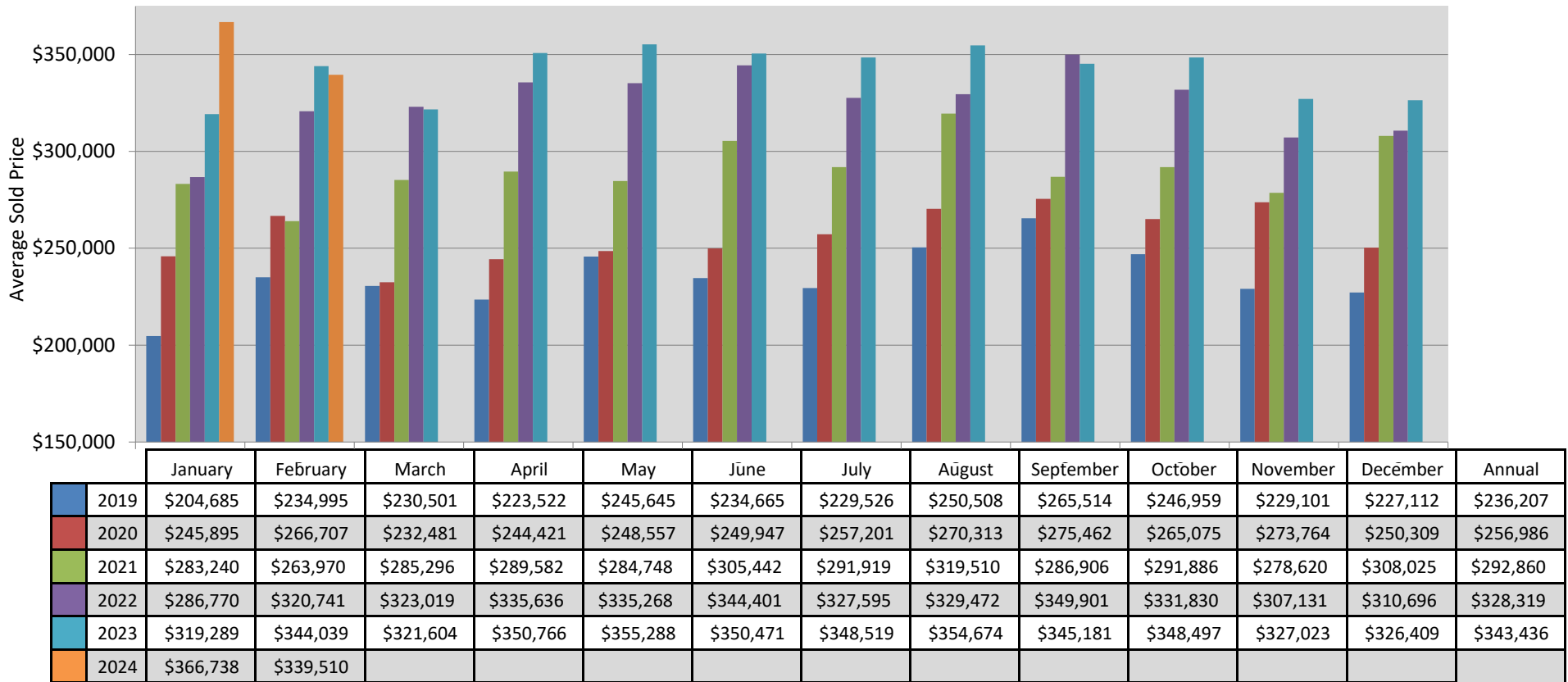


	January	February	March	April	May	June	July	August	September	October	November	December	Annual
2019	11	22	39	36	48	36	20	20	16	24	11	20	303
2020	13	22	30	29	37	43	38	42	30	29	31	28	372
2021	22	31	42	38	26	44	34	27	27	38	31	55	415
2022	20	29	41	29	31	28	20	16	17	23	17	17	288
2023	12	24	23	33	47	36	35	25	26	29	27	11	328
2024	20	13											33

This representation is based in whole or in part on the data supplied by the Columbia Board of REALTORS® (CBOR). CBOR does not guarantee nor is in any way responsible for its accuracy. Data maintained by CBOR may not reflect all real estate activity in the market.



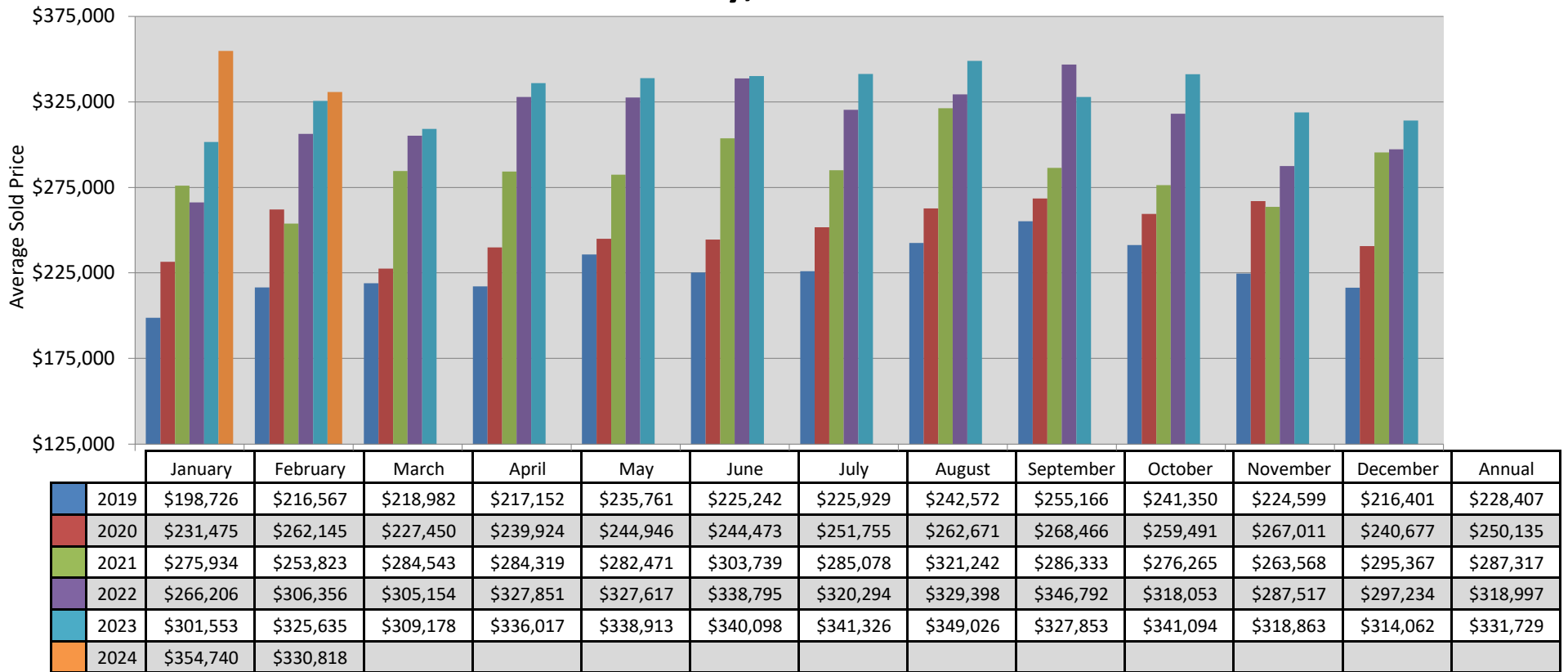
Single Family Homes Average Sold Price Per Month in Boone County, Missouri



This representation is based in whole or in part on the data supplied by the Columbia Board of REALTORS® (CBOR). CBOR does not guarantee nor is in any way responsible for its accuracy. Data maintained by CBOR may not reflect all real estate activity in the market.



Existing Single Family Homes Average Sold Price Per Month in Boone County, Missouri



This representation is based in whole or in part on the data supplied by the Columbia Board of REALTORS® (CBOR). CBOR does not guarantee nor is in any way responsible for its accuracy. Data maintained by CBOR may not reflect all real estate activity in the market.



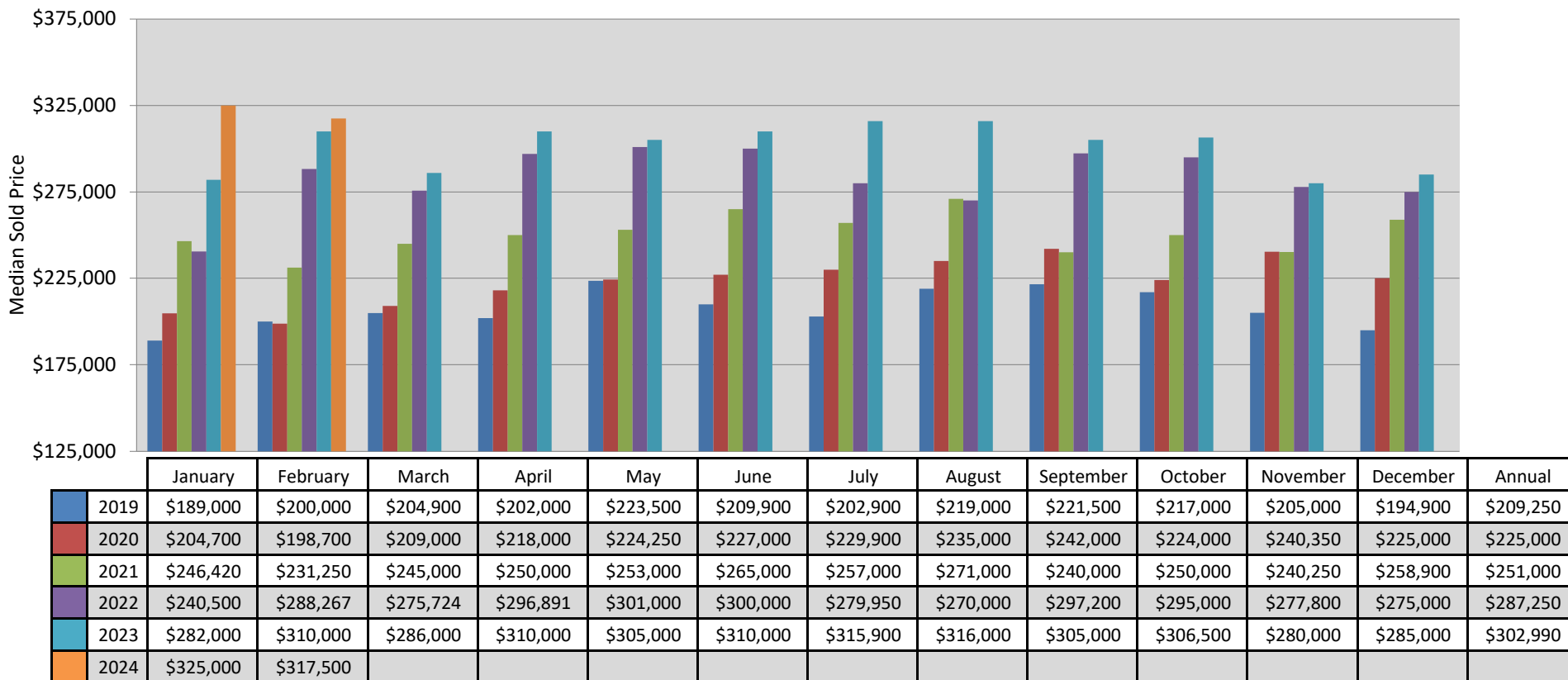
New Construction Single Family Homes Average Sold Price Per Month in Boone County, Missouri



This representation is based in whole or in part on the data supplied by the Columbia Board of REALTORS® (CBOR). CBOR does not guarantee nor is in any way responsible for its accuracy. Data maintained by CBOR may not reflect all real estate activity in the market.



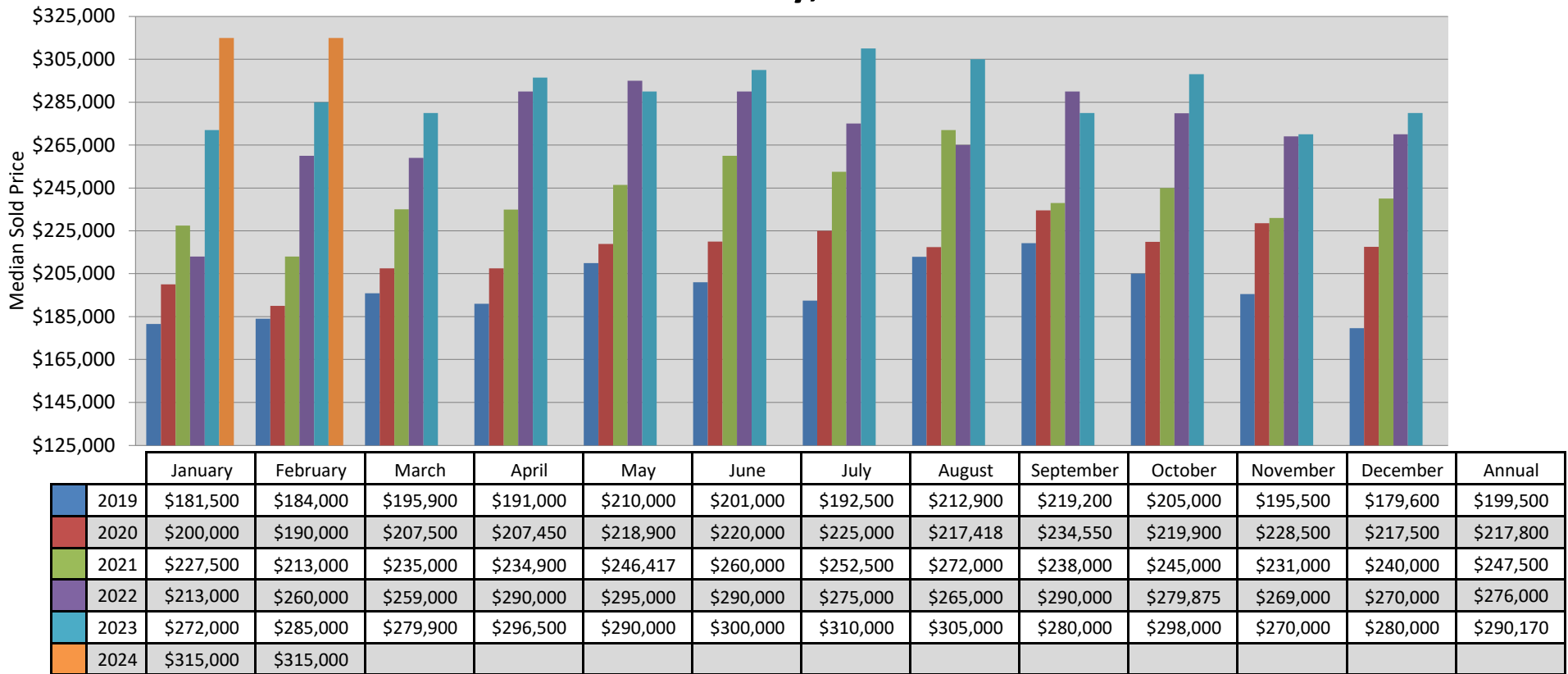
Single Family Homes Median Sold Price Per Month in Boone County, Missouri



This representation is based in whole or in part on the data supplied by the Columbia Board of REALTORS® (CBOR). CBOR does not guarantee nor is in any way responsible for its accuracy. Data maintained by CBOR may not reflect all real estate activity in the market.



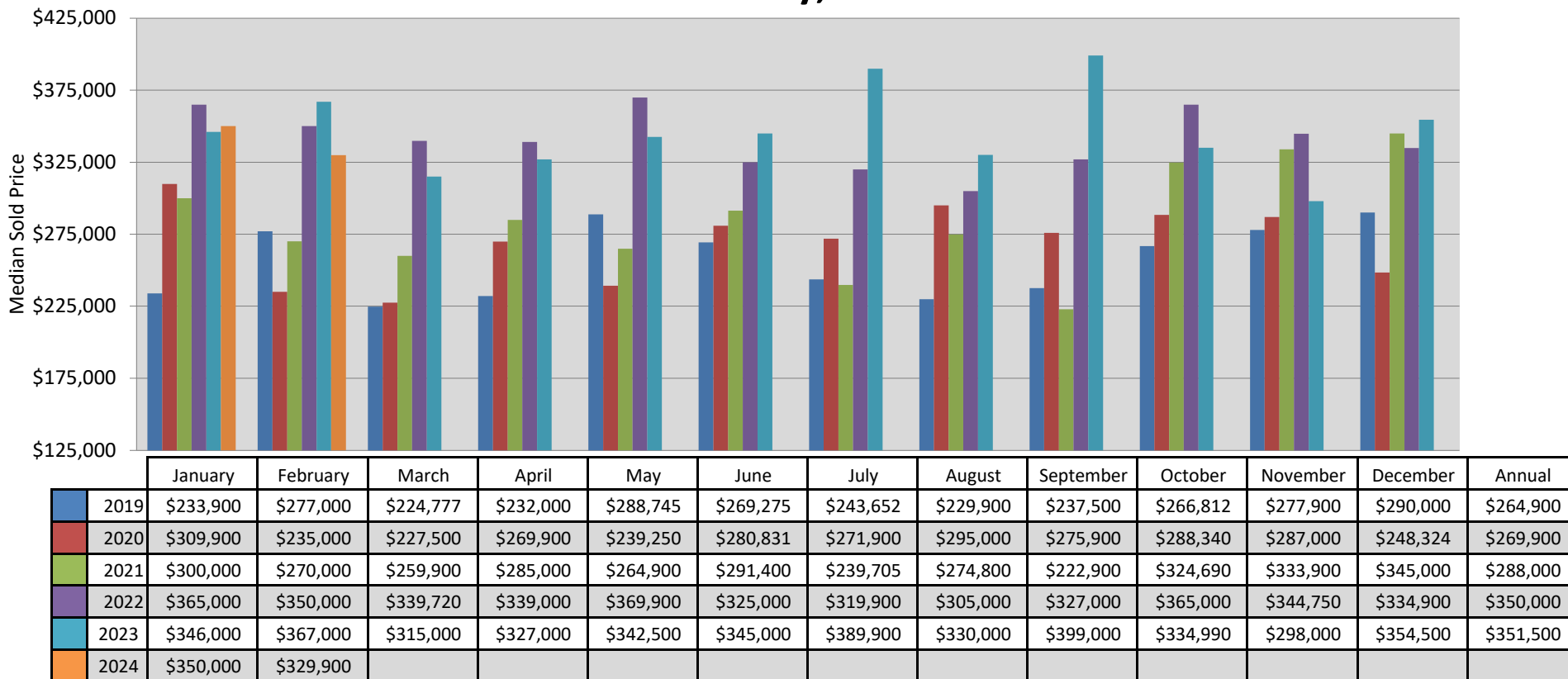
Existing Single Family Homes Median Sold Price Per Month in Boone County, Missouri



This representation is based in whole or in part on the data supplied by the Columbia Board of REALTORS® (CBOR). CBOR does not guarantee nor is in any way responsible for its accuracy. Data maintained by CBOR may not reflect all real estate activity in the market.



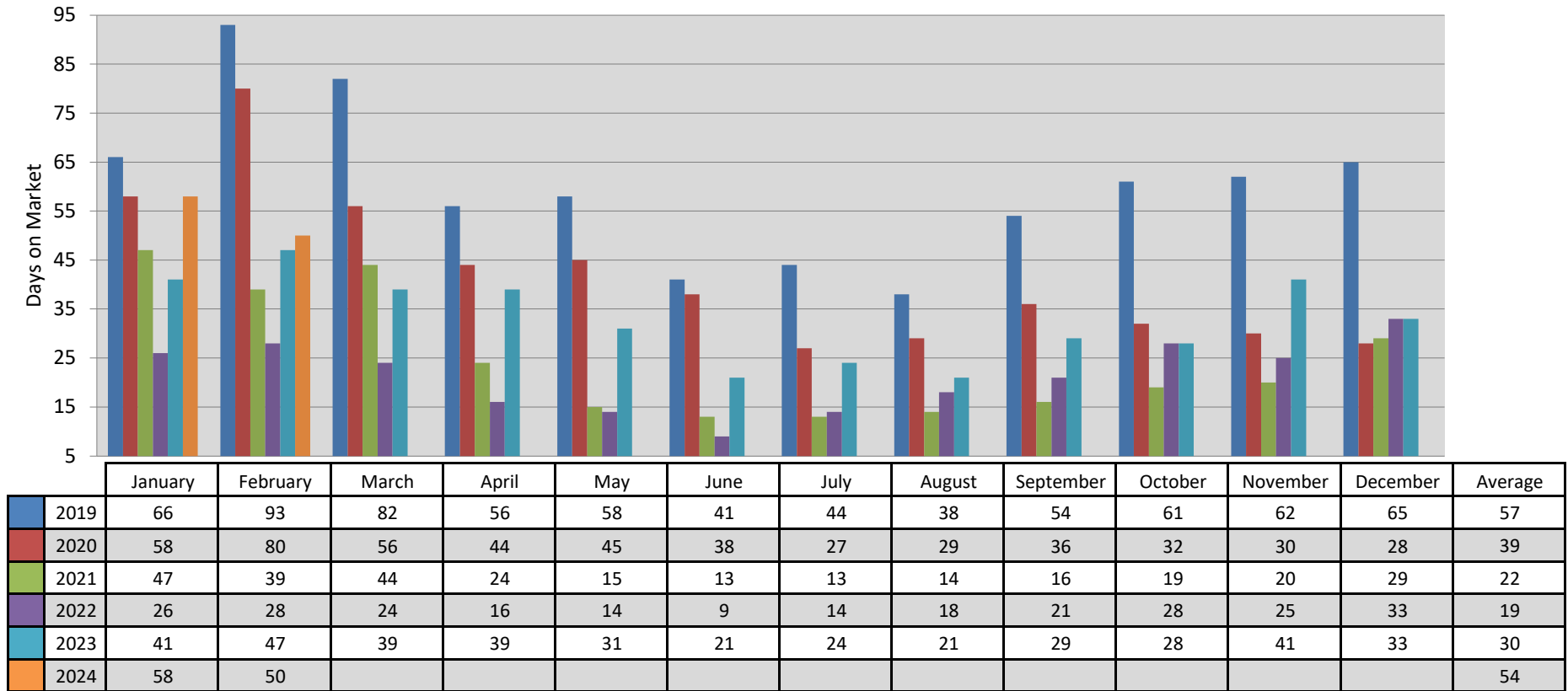
New Construction Single Family Homes Median Sold Price Per Month in Boone County, Missouri



This representation is based in whole or in part on the data supplied by the Columbia Board of REALTORS® (CBOR). CBOR does not guarantee nor is in any way responsible for its accuracy. Data maintained by CBOR may not reflect all real estate activity in the market.



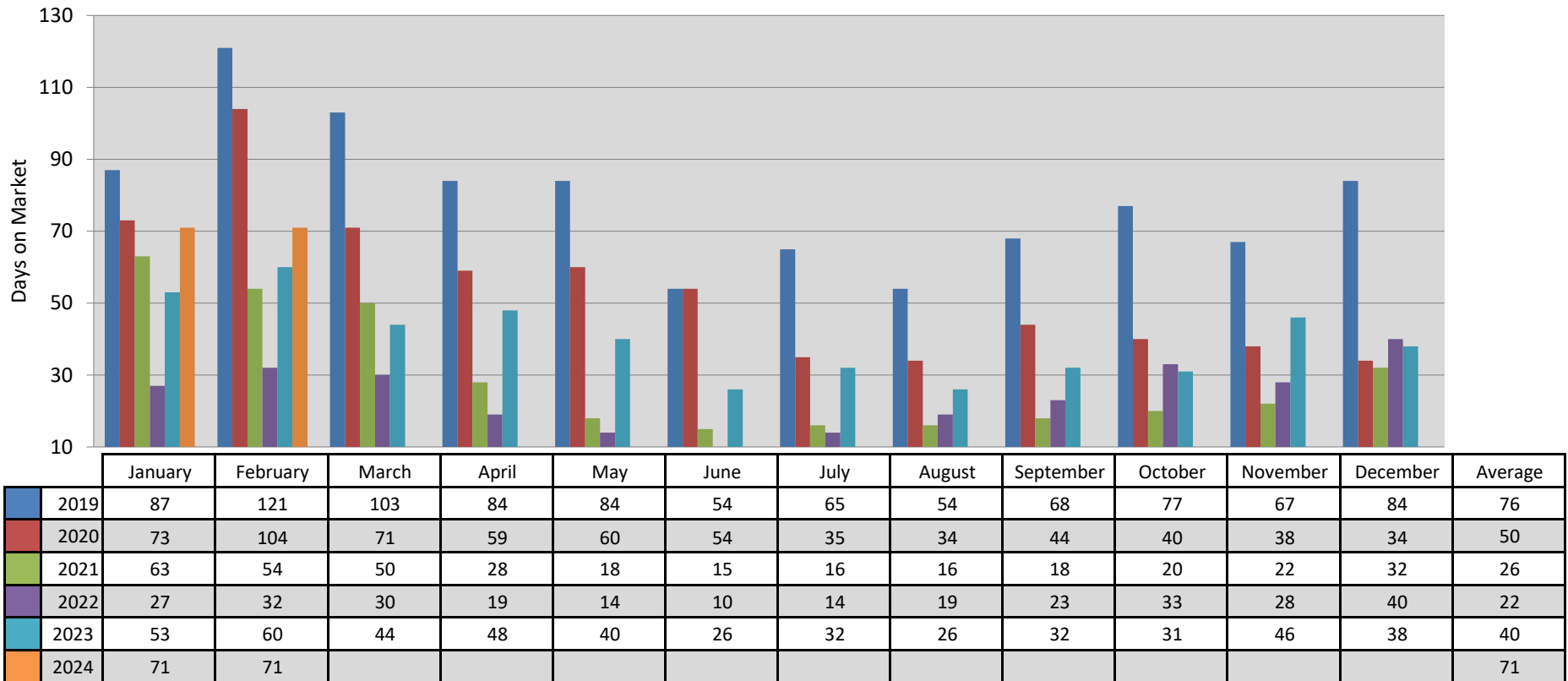
Single Family Homes Average Days on Market Per Month in Boone County, MO



This representation is based in whole or in part on the data supplied by the Columbia Board of REALTORS® (CBOR). CBOR does not guarantee nor is in any way responsible for its accuracy. Data maintained by CBOR may not reflect all real estate activity in the market.



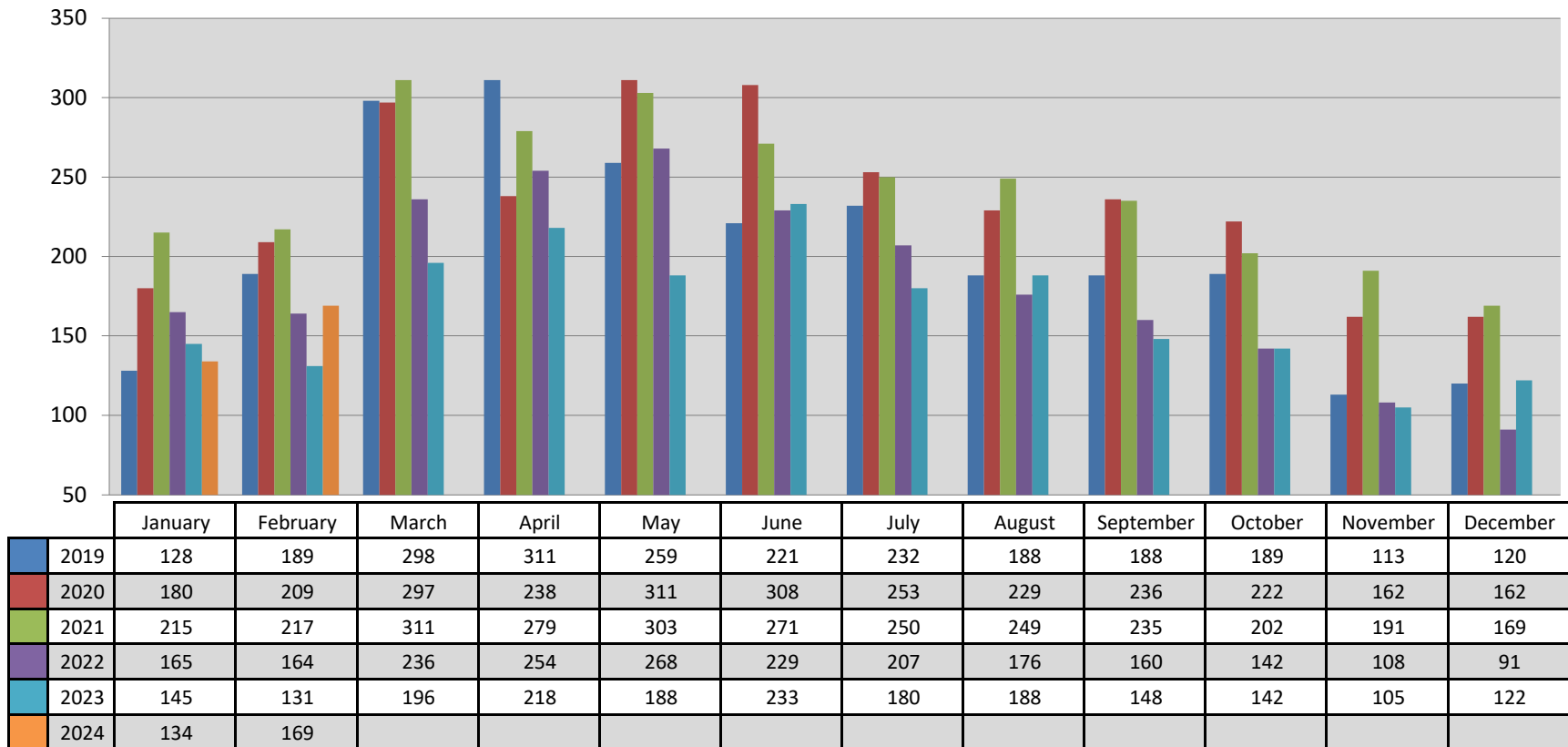
Single Family Homes Average Cumulative Days on Market Per Month in Boone County, MO



This representation is based in whole or in part on the data supplied by the Columbia Board of REALTORS® (CBOR). CBOR does not guarantee nor is in any way responsible for its accuracy. Data maintained by CBOR may not reflect all real estate activity in the market.



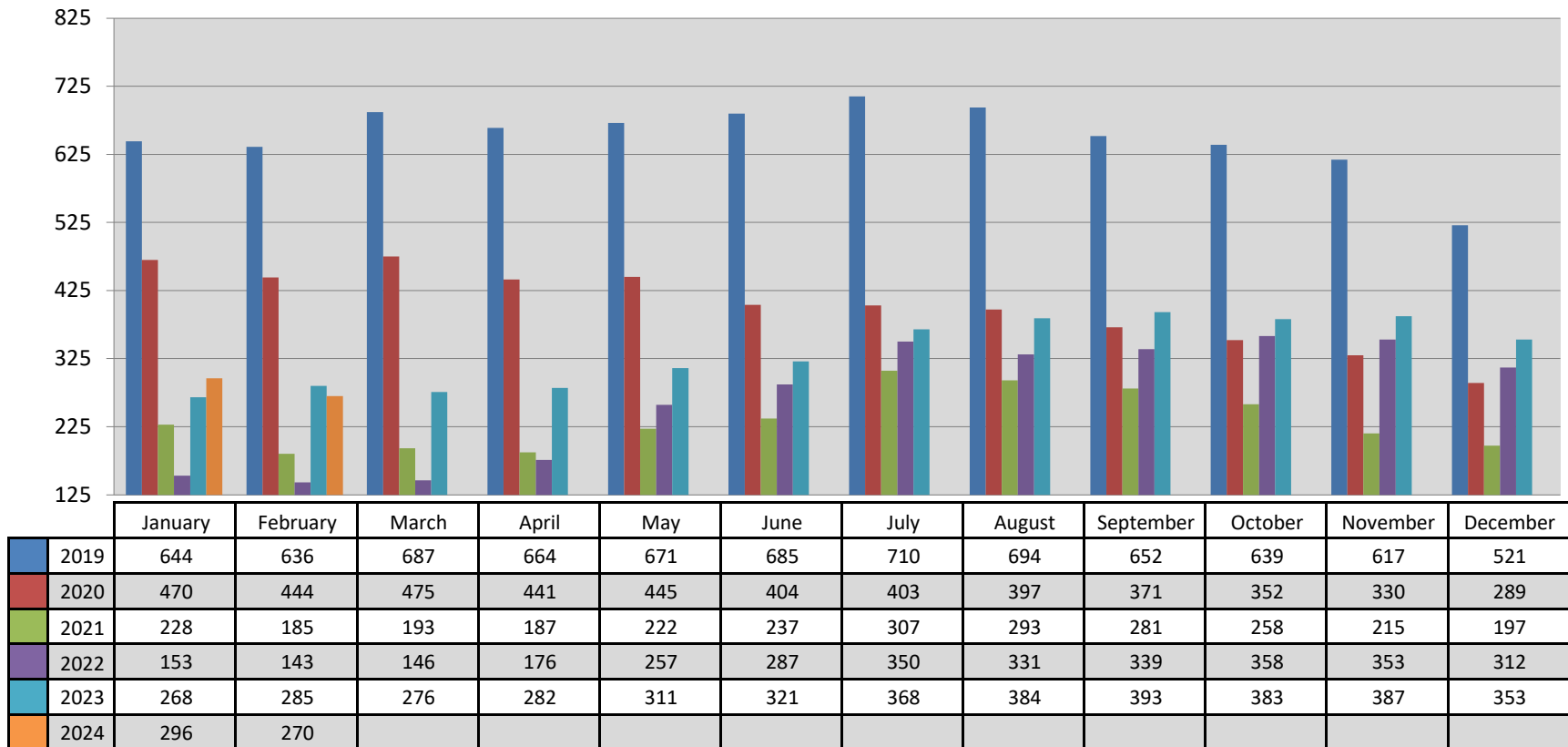
Single Family Pending Listings on Market Per Month in Boone County, MO



This representation is based in whole or in part on the data supplied by the Columbia Board of REALTORS® (CBOR). CBOR does not guarantee nor is in any way responsible for its accuracy. Data maintained by CBOR may not reflect all real estate activity in the market.



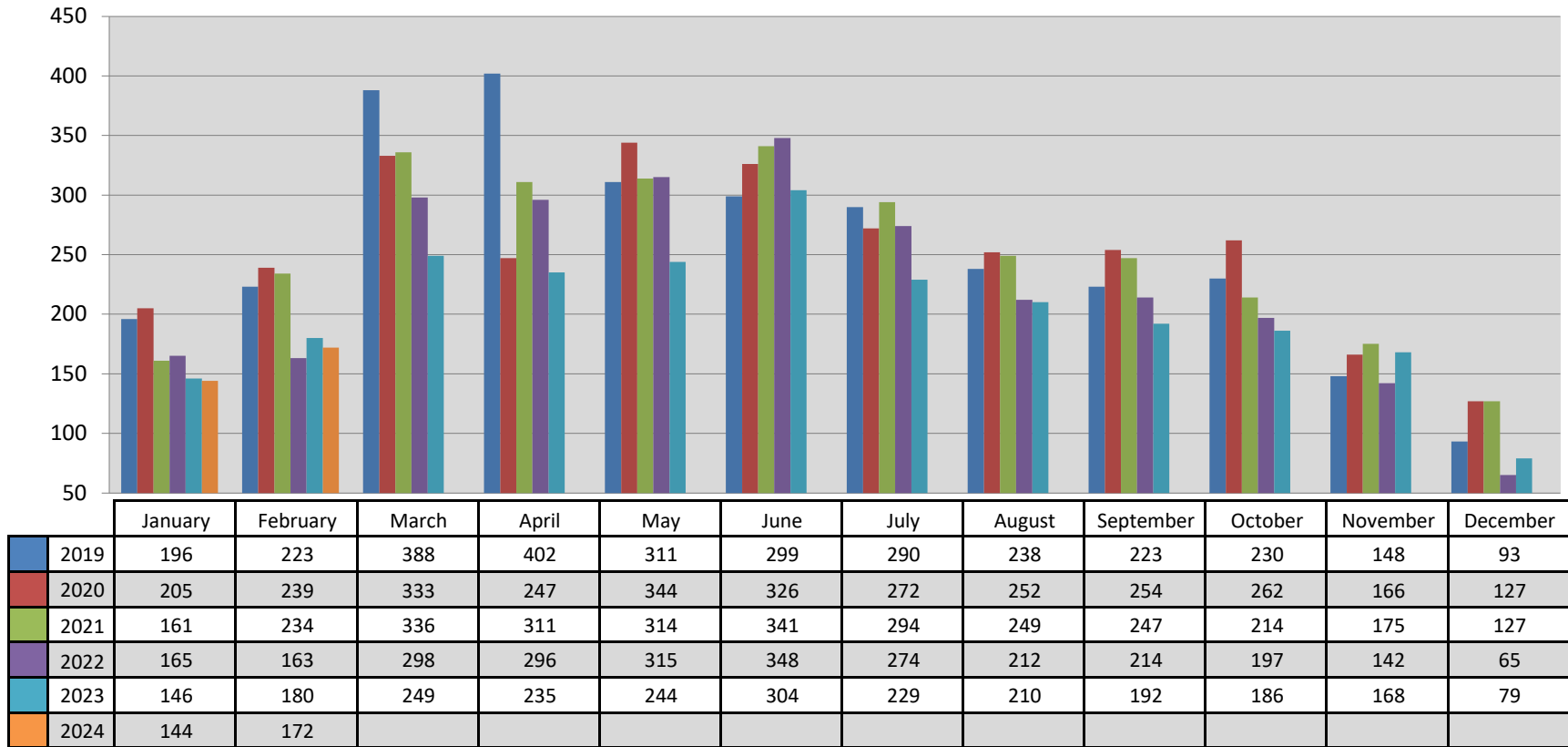
Single Family Active Listings on Market Per Month in Boone County, MO



This representation is based in whole or in part on the data supplied by the Columbia Board of REALTORS® (CBOR). CBOR does not guarantee nor is in any way responsible for its accuracy. Data maintained by CBOR may not reflect all real estate activity in the market.



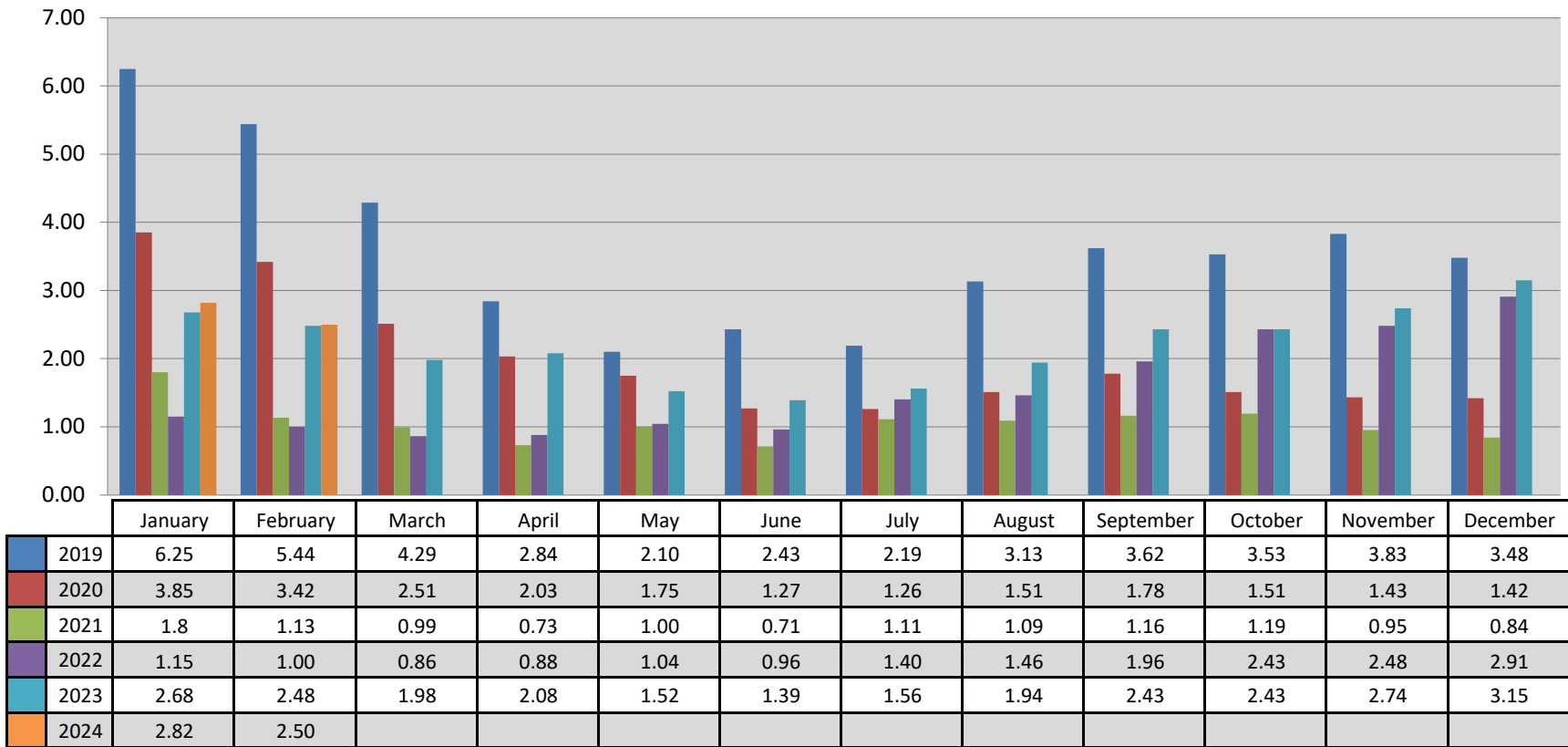
Single Family New Listings Added to Market Per Month in Boone County, MO



This representation is based in whole or in part on the data supplied by the Columbia Board of REALTORS® (CBOR). CBOR does not guarantee nor is in any way responsible for its accuracy. Data maintained by CBOR may not reflect all real estate activity in the market.



Months Supply of Inventory of Single Family Homes in Boone County, MO



This representation is based in whole or in part on the data supplied by the Columbia Board of REALTORS® (CBOR). CBOR does not guarantee nor is in any way responsible for its accuracy. Data maintained by CBOR may not reflect all real estate activity in the market.



February 2024 Sold Single Fam. Homes by Price Range for Boone County, MO

2023

Sold Listings	
List Price Range	# of Listings
\$0-\$99,999	3
\$100,000-\$149,999	6
\$150,000-\$199,999	15
\$200,000-\$249,999	14
\$250,000-\$299,999	13
\$300,000-\$349,999	21
\$350,000-\$399,999	13
\$400,000-\$449,999	4
\$450,000-\$499,999	14
\$500,000-\$749,999	10
\$750,000 - \$999,999	1
\$1,000,000+	1
Total	115

2024

Sold Listings	
List Price Range	# of Listings
\$0-\$99,999	4
\$100,000-\$149,999	3
\$150,000-\$199,999	9
\$200,000-\$249,999	9
\$250,000-\$299,999	18
\$300,000-\$349,999	25
\$350,000-\$399,999	11
\$400,000-\$449,999	7
\$450,000-\$499,999	6
\$500,000-\$749,999	15
\$750,000 - \$999,999	0
\$1,000,000+	1
Total	108

This representation is based in whole or in part on the data supplied by the Columbia Board of REALTORS® (CBOR). CBOR does not guarantee nor is in any way responsible for its accuracy. Data maintained by CBOR may not reflect all real estate activity in the market.



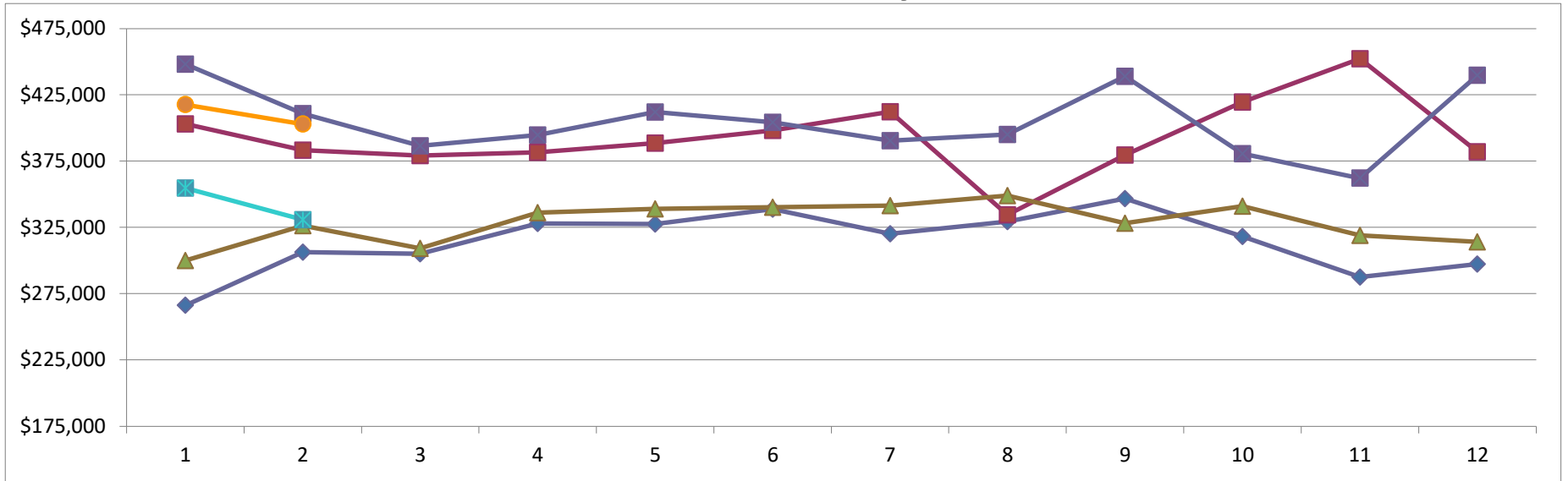
February 2024 Single Family Residence Months Supply of Inventory by Price Range for Boone County, MO

List Price Range	# of Months Supply	DOM	CDOM
0-\$99,999	0.75	20	20
\$100,000-\$149,999	2.67	24	54
\$150,000-\$199,999	1.44	49	55
\$200,000-\$249,999	1.44	37	38
\$250,000-\$299,999	1.11	56	94
\$300,000-\$349,999	1.08	47	65
\$350,000-\$399,999	3.00	33	53
\$400,000-\$449,999	3.86	81	86
\$450,000-\$499,999	4.67	49	69
\$500,000-\$749,999	4.27	65	105
\$750,000-\$999,999	0.00	0	0
1,000,000+	10.00	102	102

This representation is based in whole or in part on the data supplied by the Columbia Board of REALTORS® (CBOR). CBOR does not guarantee nor is in any way responsible for its accuracy. Data maintained by CBOR may not reflect all real estate activity in the market.



New Construction Single Family Vs. Existing Homes Average Sold Price Per Month in Boone County, Missouri

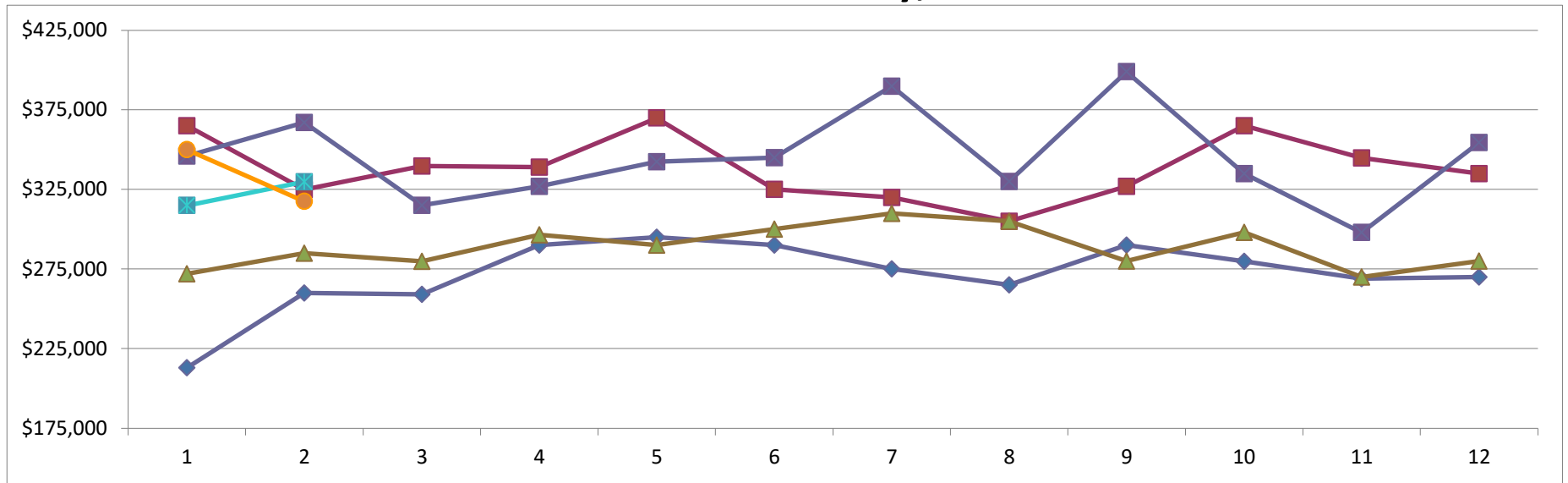


	January	February	March	April	May	June	July	August	September	October	November	December
2022 Existing	\$266,206	\$306,356	\$305,154	\$327,851	\$327,617	\$338,795	\$320,248	\$329,398	\$346,792	\$318,053	\$287,517	\$297,234
2022 New Const	\$402,953	\$383,199	\$379,230	\$381,540	\$388,576	\$398,093	\$412,292	\$334,525	\$379,523	\$419,575	\$452,325	\$381,965
2023 Existing	\$299,999	\$326,351	\$309,178	\$336,017	\$338,913	\$340,098	\$341,326	\$349,026	\$328,107	\$341,094	\$318,863	\$314,062
2023 New Const	\$448,186	\$410,728	\$386,436	\$394,687	\$412,077	\$404,316	\$390,445	\$395,115	\$439,010	\$380,548	\$362,195	\$439,773
2024 Existing	\$354,740	\$330,818										
2024 New Const	\$417,732	\$403,028										

This representation is based in whole or in part on the data supplied by the Columbia Board of REALTORS® (CBOR). CBOR does not guarantee nor is in any way responsible for its accuracy. Data maintained by CBOR may not reflect all real estate activity in the market.



New Construction Single Family Vs. Existing Homes Median Sold Price Per Month in Boone County, Missouri

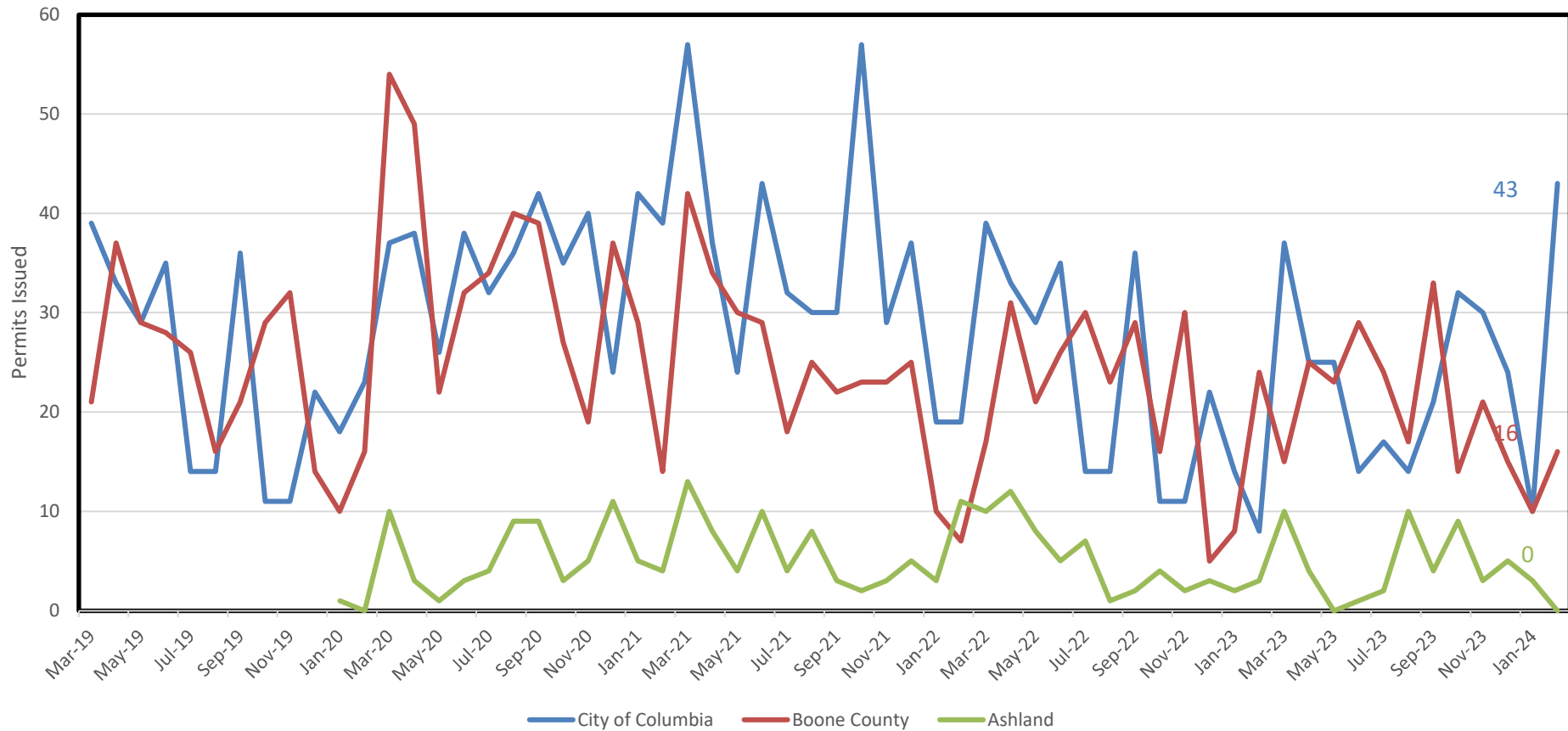


	January	February	March	April	May	June	July	August	September	October	November	December
2022 Existing	\$213,000	\$260,000	\$259,000	\$290,000	\$295,000	\$290,000	\$275,000	\$265,000	\$290,000	\$279,875	\$269,000	\$270,000
2022 New Const	\$365,000	\$324,900	\$339,720	\$339,000	\$369,900	\$325,000	\$319,900	\$305,000	\$327,000	\$365,000	\$344,750	\$334,900
2023 Existing	\$272,000	\$285,000	\$279,900	\$296,500	\$290,000	\$300,000	\$310,000	\$305,000	\$280,000	\$298,000	\$270,000	\$280,000
2023 New Const	\$346,000	\$367,000	\$315,000	\$327,000	\$342,500	\$345,000	\$389,900	\$330,000	\$399,000	\$334,990	\$298,000	\$354,500
2024 Existing	\$315,000	\$329,900										
2024 New Const	\$350,000	\$317,500										

This representation is based in whole or in part on the data supplied by the Columbia Board of REALTORS® (CBOR). CBOR does not guarantee nor is in any way responsible for its accuracy. Data maintained by CBOR may not reflect all real estate activity in the market.



New Residential Single Family Detached Building Permits Issued By City of Columbia, Ashland, & Boone County, MO



This representation is based in whole or in part on the data supplied by the Columbia Board of REALTORS® (CBOR). CBOR does not guarantee nor is in any way responsible for its accuracy. Data maintained by CBOR may not reflect all real estate activity in the market.